



Sealsafe^{plus}

RAT IVC GREEN LINE

- Improved cage density means having double sided racks for rats
- Exceptional filtration and enhanced containment for optimal animals and operators protection
- Visibility is increased and weight has been reduced with the half wire bar lid



"If you need a double sided high density rat cage system with exceptional sealing this is the product you could choose".



HOUSING



TECNIPLAST
innovation through passionSM



HOUSING

Sealsafe® PLUS Rat IVC Green Line

1/Enhanced Density

The system features both a new cage base and specially designed low-profile top enabling seven rows of housing under 2 meters tall.

2/Cage Airflow Design

A preference test has demonstrated that animals prefer cages having the air supply in the top.

Inlets in the top prevent the animals from being exposed to airdrafts and consequently from potential anxious behaviour and stress. GR900 cage is the latest generation of IVC with a revolutionary airflow pattern that reduces the risk of discomfort and possible stress for the animals.

3/Cage Self-Locking System (CSS) & Visual Docking Indicator

The rack runners have built-in stoppers that fit the stopping lugs precisely, so each cage stops and locks silently into place automatically - and almost effortlessly. A visual indicator flags any cage that is not fully docked. When a cage is fitted properly into the rack, the flag disappears from view. (No flag? No problem!).

4/Easy Access

The latch-free tops requires a simple press on the cage's front button to open the cage. The half wire bar lid enables full access to each cage's contents without the need of removing it during the cage change operations and procedures.

5/External Self-centering Water Bottles

The cage top features two self-centering depressions to accommodate two external water bottles. It's possible to remove or change bottles without disturbing or stressing the animals speeding up the procedure thanks to the self-centering indentation. The water bottles feature a silicone o-ring for easy, perfect sealing and are fitted with a coneshaped AISI 316 stainless steel cap which maximize water availability.

6/Enhanced Containment and Filtration

The cage body features a silicone gasket with a silicon lip that fits snugly around the base, assuring an occlusive seal and an ideal containment when the top is fitted. This means that even when running in positive pressure, laboratory allergens are contained, protecting both staff and researchers.

A large square filter (0.2 microns filter pores size) kept in place on the top of the cage by a filter retainer with silicon sealing also ensures the safety of inhabitants in case of power failure without compromising the protection.

7/ Easy & Smart Flow: the latest generation of Air Handling Units

Easy Flow and Smart Flow are the latest generation of air handling units: heat emission is 10% and power consumption 50% less than the old generation of AHUs. Microprocessor driven (Automatic constant flow rate and filter load compensation) they guarantee safety for animals, operators and the environment: Every single air handling unit manufactured is tested for filter integrity and HEPA filtration efficiency through the DOP test. The Easy flow is optimal in terms of simplicity of use. The Smart Flow features a new generation of touch screen control panels offering advanced setting features and enhanced flexibility.

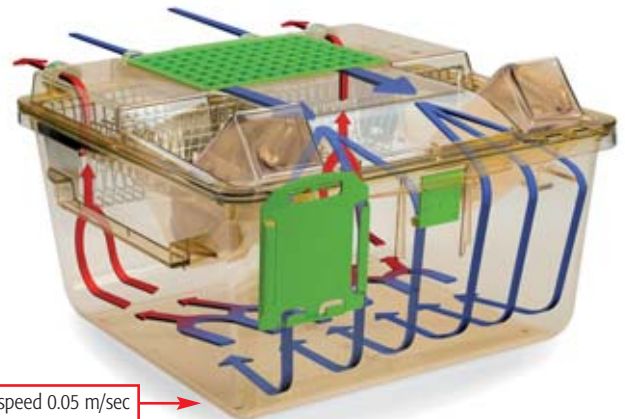
Enhanced Density

1



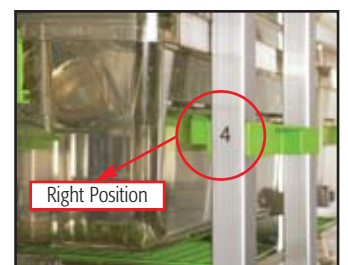
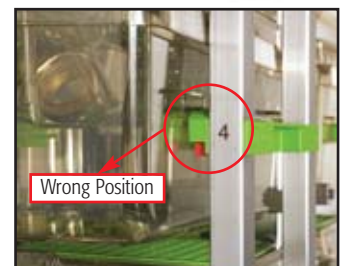
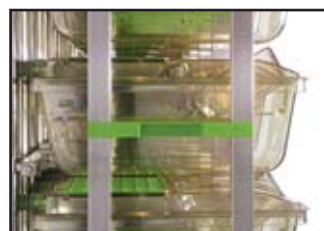
Cage Airflow Design

2



Cage Self-Locking System (CSS) & Visual Docking Indicator

3



Easy Access

4



External Self-centering Water Bottles

5



Enhanced Containment and Filtration

6



TECHNICAL SHEET

GR900 cage

Floor Area:

904 cm² • 140.12 sq inch

Overall Dimensions (W x D x H):

395 x 346 x 213 (227*) mm • 15.55 x 13.63 x 8.39 (8.93*) inch

*With water bottle

Plastic Type:

H-TEMP (Polysulfone): 3 years warranty

X-TEMP (Polyphenilsulfone): 8 years warranty

Cage Body:

Radial silicon gasket (occlusive seal); High stackability; Simmetric (no back no front)

Lid:

Half wire bar lid style

Feeder Capacity:

1.30 l • 43.96 fl oz (US) • 45.75 fl oz (UK)

Top:

Filter retainer with silicon gasket; Selfcentering indentations for external water bottles

Water Bottle:

312 ml • 10.55 oz (US) • 10.98 oz (UK) capacity each

External with Oring for perfect sealing

Cage Filter Efficiency:

Microbiological filter (0.2 micron pore size)

Bacterial and Virus Filtration Efficiency (BFE and VFE) ≥ 99.999%

GR900 rack

Cat. N.	Configuration	Specie	Overall Dimensions (L x W x H) - mm / inch
2GR28	28 cages (4 w x 7 h) Single sided	Rat/Mouse*	1462 x 500 x 1881 (1976*) / 57.56 x 19.68 x 74.05 (77.80*)
2GR35	35 cages (5 w x 7 h) Single sided	Rat/Mouse*	1820 x 500 x 1881 (1976*) / 71.65 x 19.68 x 74.05 (77.80*)
2GR56	56 cages (4 w x 7 h) Double sided	Rat/Mouse*	1462 x 888 x 1881 (1987*) / 57.56 x 34.96 x 74.05 (78.23*)
2GR70	70 cages (5 w x 7 h) Double sided	Rat/Mouse*	1820 x 888 x 1881 (1987*) / 71.65 x 34.96 x 74.05 (78.23*)

*Mouse cage accessories required

* With removable supply plenum

Easy & Smart Flow

7



- Energy-saving and Eco-compatible.
- Light and ergonomic.
- Safe for animals/operators/ environment.
- User firendly.
- Multilinking: one AHU serves up to four racks.
- High monitoring and security: Remote Alarm System (RAS) and Wireless Data Management (WDM).



Options

For Cage:

- Cage body with grommet, for auto watering
- Flat top, without bottle indentation, for auto watering
- Top with single bottle indentation
- Top with depression for disposable water pouches
- Wire bar lid for mice
- Vertical or Horizontal flip up plastic card holder
- Raised floor grid

For Rack:

- Rack with automatic watering system
- Quick disconnecting magnetic joints (connecting AHU to rack or rack to rack)
Flexible hoses (available in several lengths)

Warranty

H-TEMP Polysulfone (PSU) cages are guaranteed for 3 years from the date stamp. This plastic is highly resistant, it can be autoclaved at 134° C/273° F. Considering an average of one autoclaving cycle per week, the 3 years of warranty are comparable to at least 150 cycles.

X-TEMP Polyphenilsulfone (PPSU) cages are guaranteed for 8 years from the date stamp. This plastic is highly resistant, it can be autoclaved at 134° C /273° F. Considering an average of one autoclaving cycle per week, the 8 years of warranty are comparable to at least 400 cycles.



TECNIPLAST

HEADQUARTERS

ITALY | Tel. +39 0332 809711 • www.tecniplast.it • E-mail: tecnicom@tecniplast.it

SISTER COMPANIES

AUSTRALIA/NEW ZEALAND | Tel. + 61 2 8845 6500 • www.tecniplast.it • E-mail: info@tecniplast.com.au

FRANCE | Tél. 04 72 52 94 41 • www.tecniplast.fr • E-mail: info@tecniplast.fr

GERMANY | Tel. 08805 921320 • www.tecniplast.de • E-mail: info@tecniplast.de

UNITED KINGDOM | Tel. 0845 0504556 • www.tecniplast.it • E-mail: info@tecniplastuk.com

JAPAN | Tel. + 03 5770 5375 • www.tecniplast.it • E-mail: info@tecniplastjapan.co.jp

USA/CANADA | Toll Free: 877.669.2243 • www.tecniplastusa.com • E-mail: info@tecniplastusa.com

To find your local distributor, please visit www.tecniplast.it



ISO-9001 - Cert. n° 0875



ISO-14001 - Cert. n° 0256A/0



Tecniplast reserves the right to change or modify product and or specifications without notice or obligation.
Sealsafe Plus Rat is a Tecniplast registered trademark.

Related Products

To maximise operational efficiency and learn more about these products contact your local representative.



Purple line DCC915.
Drawer style cage for rats. The top stays on the rack while opening the cage. DCC stands for dynamic containment which is an unidirectional flow of air provided by the plastic top which protects the operators. Ideal for toxicology, oncology, protection for staff against allergens, quarantine.



CS5 Evo changing station.
Compact, ergonomic and light double-side mobile Changing Station that allows the user to easily move the cabinet inside the animal room.



BS60, Biosafety Changing Station.
Double side Biosafety Changing Station ideal for rat cages.