

Configurations

E-Line (*):

- 9EEWF: In-line continuous Emptying, Washing and Filling station with integrated ERGO series bottle washer.
- 9EW: Bottle washer ERGO series (with loading side shelf).
- 9EEW: Bottle emptying and washing station with integrated ERGO bottle washer.
- 9EWF: Bottle washing and filling station with integrated ERGO bottle washer.
- 9EE: Bottle emptying station.
- 9EF: Bottle filling station - 1 manifold, 36 nozzles.
- 9EFAU: Bottle filling station to accommodate water acidification unit.
- 9EB1000: Dripping/staging table (surface sloping to the center drain)
- 9EEDS: Bottle Semi-Automated decapping and emptying system.
- 9ERS: Bottle Semi-Automated recapping system.

(*): Note: all the below items can be configured and aligned as requested.

S-Line (*):

- 9SW: Bottle washer SERVO series, featuring motorized plastic conveyor, pass through workflow and glass sliding doors.
- 9SDW: Motorized bottle emptying, decapping and washing station with integrated SERVO bottle washer.
- 9SB2,4,6,8,10: Loading or unloading side motorized buffer extension x #2,4,6,8,10 crates.

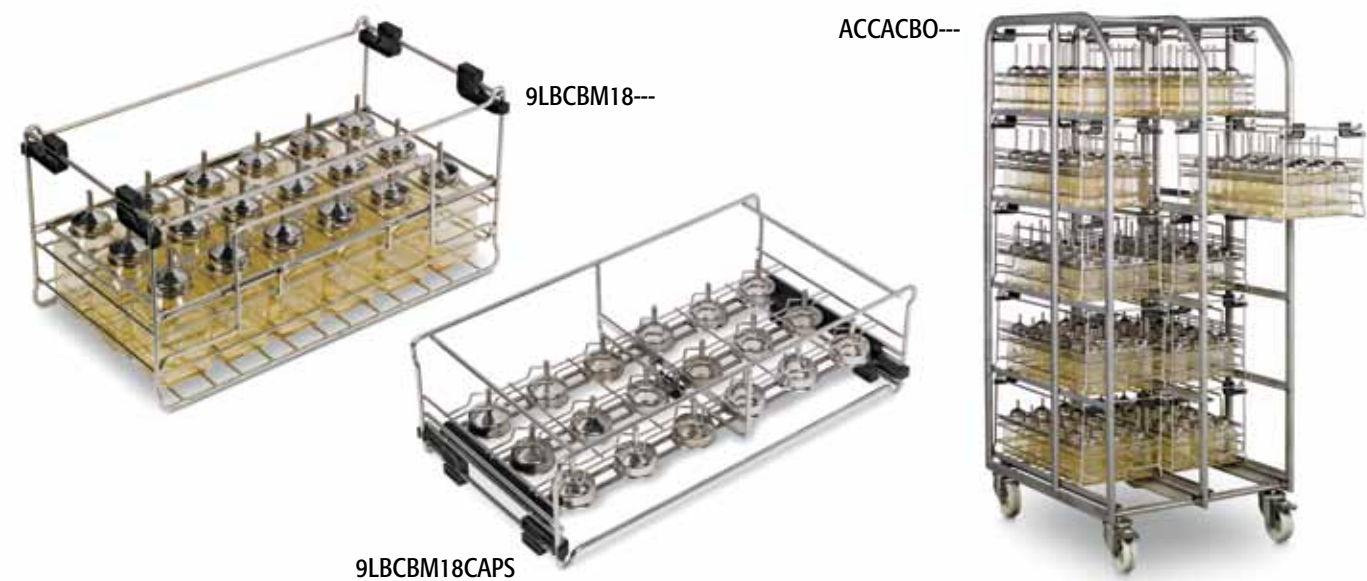
(*): Note: all the below items can be configured and aligned as requested. They can be also integrated in-line with the portfolio of E-Line tables.

P-Line:

- 9PDWFR: Semi automated integral bottle processing system, for continuous bottle decapping, emptying, washing, filling and recapping.
- 9PDWR(*): Semi automated integral bottle processing system, for continuous bottle decapping, emptying, washing and recapping.
- 9PFR(*): Semi automated integral bottle filling and recapping system.
- 9PB2,4,6,8,10: Loading or unloading side motorized buffer extension x #2,4,6,8,10 crates.

(*): Note: split up configuration specifically thought for those applications where bottles are autoclaved emptied and filled with water after autoclaving cycle.

Integrated Logistic Solutions

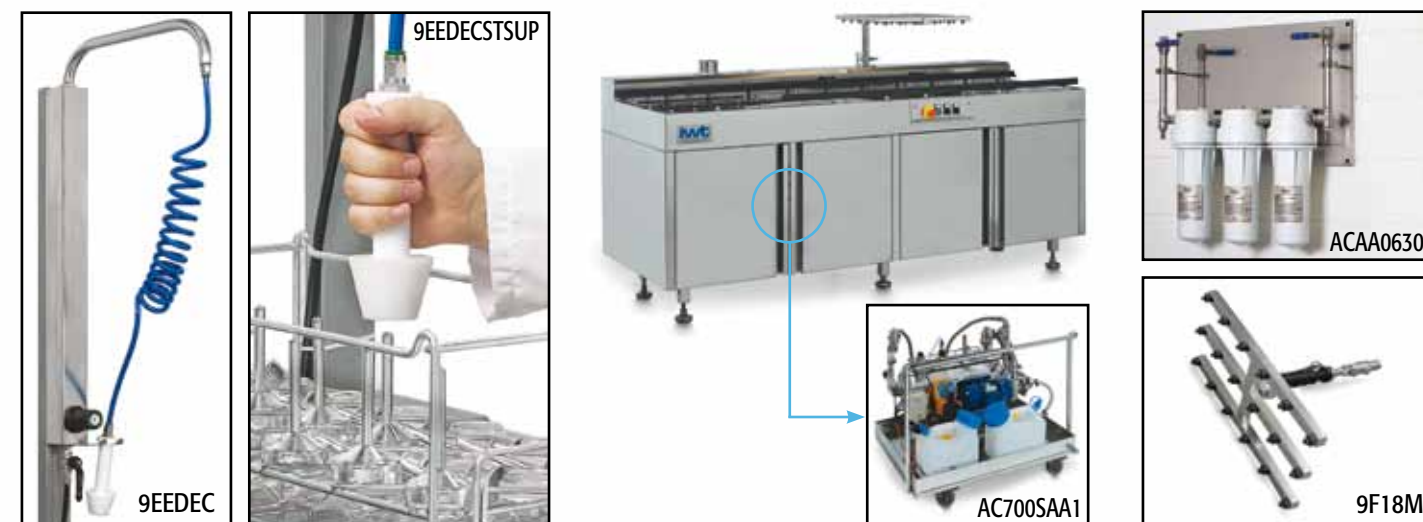


ACCACBO---

9LBCBM18---

9LBCBM18CAPS

Options and Water Treatment Accessories



Integrated Logistic Solutions

- BC-Matic™ S/s crate for 18 bottles inclusive of integrated s/s slinding lid and #4 plasticautoclavable feet (9LBCBM18---)*.
- Presentation caps-crate for 18-caps individual wash, suitable to work with both E and S lines (9LBCBM18CAPS).
- Autoclavable stainless steel transport trolley with drawers (ACCACBO---).

* Please consult with your local representative for bottle model/size and crate compatibility.

Options and Water Treatment Accessories

- S/s electro-polished tubular trolley, mobile for use of the acidifier as a stand alone separate unit (ACCAC0011).
- S/s electro-polished tubular trolley, mobile and to be fitted during operation under the filling table (ACCAC0021).
- "Magic" individual cap remover by compressed air (9EEDEC).
- S/s support to fix the "Magic" cap remover (9EEDCSTSUP).
- Bottle filling station to accommodate water acidification unit (9EFAU).
- Drinking water acidification unit (AC700SAA1).
- Stand alone 18 nozzles filling manifold with quick release valve handle (9F18M).
- Re-filtering control panel from 10 µ down to 0,2 µ provided with disinfection injection point (ACAA0630).

Related Products

To maximise operational efficiency and learn more about these products contact your local representative.



Poseidon: an outstandingly compact, full bottle automation system. An ergonomically designed, efficient and effective solution. Footprint reduced to the minimum to suit the needs of mid-size facilities as well.



Logistic trolleys offer safety and ergonomic features that enable high load-density for moving cages and bottles, crates, pallets and covers.



900 GP Rack Washer. Designed specifically to meet the throughput needs of medium to large size facilities, these machines will live up to your highest expectations in terms of maximum cleaning efficiency, safety, environmental impact and quality construction.

PATENT PENDING



- More value added in the entry level manual product
- Outstanding, proven performances
- Modularity concept portfolio
- Automation from bottom to top
- Integrated logistic solutions



"Bottles are one of the most recirculating items within an animal facility. That's why you have to require ergonomony and performance. In response, we have the solution!"



HEADQUARTERS
IWT s.r.l. | Tel. +39 0332.96701 • www.iwtsrl.it • E-mail: info@iwtsrl.it

SISTER COMPANIES

AUSTRALIA/NEW ZEALAND | Tel. + 61 2 8845 6500 • www.tecniplast.it • E-mail: info@tecniplast.com.au
CHINA | Tel. + 86 21 50810920 • www.tecniplast.cn • E-mail: tecniplastchina@tecniplast.it
FRANCE | Tel. 04 72 52 94 41 • www.tecniplast.fr • E-mail: info@tecniplast.fr
GERMANY | Tel. 08805 921320 • www.tecniplast.de • E-mail: info@tecniplast.de
UNITED KINGDOM | Tel. 0845 0504556 • www.tecniplast.it • E-mail: info@tecniplastuk.com
JAPAN | Tel. + 03 5770 5375 • www.tecniplast.it • E-mail: info@tecniplastjapan.co.jp
USA/CANADA | Toll Free: 877.669.2243 • www.tecniplastusa.com • E-mail: info@tecniplastusa.com

To find your local distributor, please visit www.tecniplast.it



ISO-9001:2000 - Cert. n° 3406/1



IWT SRL Società unipersonale • Società soggetta a Direzione e Coordinamento di Tecniplast S.p.A.
Sede legale e amministrativa: via Galliani 68b 21020 CASALE LITTA (VA) ITALY • C.F. e P.IVA: IT 02002720122

WASHING

ESP: Bottle Processing Solutions



1/Introduction
IWT has always been in the forefront of ergonomic bottle processing, up to the production of very articulated bottle automation systems. Nowadays, with a more operator-centric market, it is required to produce systems allowing the operator to work in best possible conditions, assuring high process standards, proven performances, modular solutions and flexible systems to fit into the tightest possible footprint. Our ESP line aims to meet all those targets.

2/More Value Added in the Entry Level Manual Product
Starting from the entry level system, certain features are essential to obtain a process under full control. You start with single-nozzle bottle wash, calibrated rinse pattern, interactive touch screen for total cycle control, in-line filter cartridge for ease of maintenance, sliding glass-door for process inspection and heat recovery system to recycle precious heat from the wasted water.

3/Outstanding, Proven Performances
The high performance s/s cylindrical jet nozzles drive the water inside the bottle with an impressive mechanical action. The consequent result is proven soil removal with parsimonious detergent consumption. Full validation protocols and microbiological test reports bear witness to those challenging activities. A special high temperature cycle assures tape-indicator turning and microbiological challenge test passed without resorting to detergent. Proven throughput performances up to 1000 set / hour (bottles + caps individually washed).

4/Modularity Concept Portfolio
The diversified portfolio, developed over a modular platform (ESP line), makes possible several combinations all together divided into #3 main lines:
Line-**E**: ERGO Basic modular system for ergonomic and efficient bottle processing.
Line-**S**: SERVO Modular servosystem to achieve efficient and effective bottle washing.
Line-**P**: POWER Fully automated and highly performing bottle processing system.

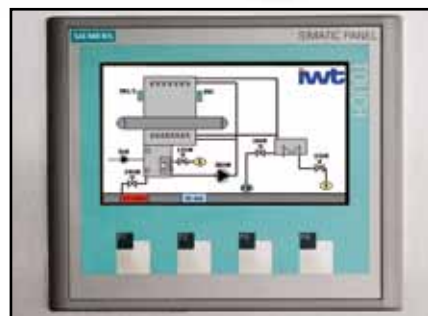
E-Line starts with the high level bottle washer combined with plenty of modular tables (emptying, de-capping, filling, buffering, re-capping,...) so as to create ergonomic and smooth functioning in-line and stand-alone operator managed bottle solutions.
S-Line upgrades the E-Line with automatic conveyor systems to serve the logistic movement from one system to the other.

P-Line, finally, merged all the bottle processing operations: bottle crate loading, de-capping, emptying, washing (bottles & caps individually and separately), filling, re-recapping, unloading in a unique impressive compact system. What about the operator? Simply loads and unloads bottlecrates!
For those facilities autoclaving bottle with no water (to shorten the autoclave cycles), P-Line offers the possibility to break down configurations. Bottles, after washing, are capped without water. The PLine automated filling and recapping unit, thereafter completes the workflow downstream of the autoclave. Buffering extensions complete the package to create extra autonomy where needed.

5/Automation from Bottom to Top
In IWT vision, automation can be seen from different viewpoints. It can be the operator support with just a semi-automated stand-alone bottle re-capping system OR semi-automated in-line de-capping & washing. But it can be much more than that. Starting from a full bottle processing system where the subject is the bottle crate manually loaded, it can also become total automation where the transport trolley is the true interface between machine and operator. There are solutions with different degrees of operator support suitable to accommodate the most divergent and demanding applications, footprints, throughput needs.

6/Integrated Logistic Solutions
Logistics is not just garnish of the bottle processing, but is the media the operator uses for bottle processing. The new BC-Matic™ bottle crate system, with embedded sliding holding frame, allows ease of operation in both animal room and wash area. In the whole process the fitting and storage of removable items is no longer required. This unique feature on top of the light easily-handling trolley makes possible an integral automation package without intermediate process operations.

Service Tables
Service Box 9EW, 9SDW, 9PDWFR all steam heated versions 400V 50Hz.
All bottle washers are available in both steam heated and electric heated versions.



Interactive Touch Screen



Single-nozzle bottle and cap wash pattern processed in separated layers



Multi-functional header for reliable and consisted cap handling



In-line S/S filter cartridge



9EW:
ERGO stand alone pass-through bottle washer with single jet bottle spray pattern.



9EWF:
In-line continuous Emptying, Washing and Filling station with integrated ERGO series bottle.



9EE:
Bottle emptying station.



9EF:
Bottle filling station 1 manifold, 36 nozzles.



9EEDS:
ERGO Bottle Semi-Automated decapping and emptying system.



9ERS:
Bottle Semi-Automated recapping system.



9EB1000:
Dripping/staging table (surface sloping to the center drain)

E-Line



9SW:
Bottle washer SERVO series, derived from ERGO washer and featuring motorized plastic conveyor, pass through workflow and glass sliding doors.



9SDW:
Motorized bottle emptying, decapping and washing station with integrated SERVO bottle washer.



9EE:
Bottle emptying station.



9EF:
Bottle filling station 1 manifold, 36 nozzles.



9EEDS:
ERGO Bottle Semi-Automated decapping and emptying system.



9ERS:
Bottle Semi-Automated recapping system.

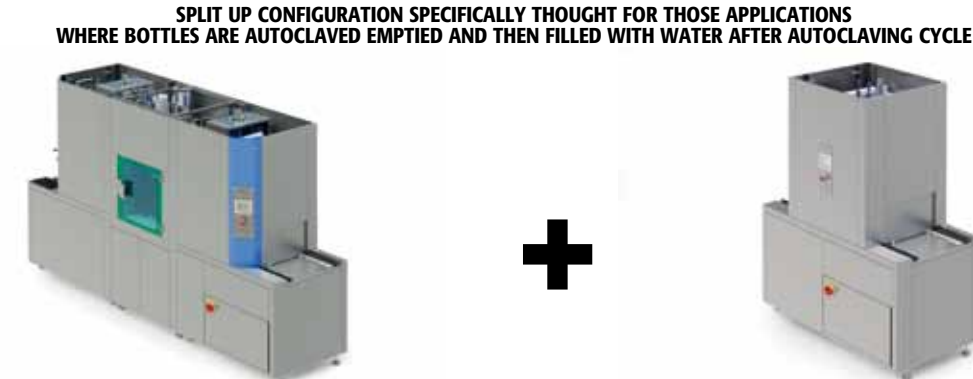


9SB2,4,6,8,10:
Loading or unloading side motorized buffer extension x #2,4,6,8,10 crates.

S-Line



9PDWFR:
Semi automated integral bottle processing system, for continuous bottle decapping, emptying, washing, filling and recapping featuring the unique system of single bottle and cap spray pattern.



SPLIT UP CONFIGURATION SPECIFICALLY THOUGHT FOR THOSE APPLICATIONS WHERE BOTTLES ARE AUTOCLAVED EMPTIED AND THEN FILLED WITH WATER AFTER AUTOCLAVING CYCLE

9PDWR: Semi automated integral bottle processing system, for continuous bottle decapping, emptying, washing and recapping.

9PFR: Semi automated integral bottle filling and recapping system.



POSEIDON:
An outstandingly compact, full bottle automation system. An ergonomically designed, efficient and effective solution. Footprint reduced to the minimum to suit the needs of mid-size facilities as well.



9PB2,4,6,8,10:
Loading or unloading side motorized buffer extension x #2,4,6,8,10 crates.

P-Line