



DATACLICK

ACK

The image shows a white rectangular control panel with a central touchscreen. The screen displays a dark blue interface with the following elements:

- Top Bar:** Shows the date and time "15-05-13 12-47" on the left, and a battery level indicator on the right.
- MICE CYCLE:** A section with the text "MICE CYCLE" and "255 s" on the right. Below it is a progress bar that is 25% full, with "25%" written in the center.
- WASHING:** A section with the text "WASHING" and "120 s" on the right. Below it is a progress bar that is 50% full, with "50%" written in the center.
- Control Buttons:** A row of three buttons: a left-pointing arrow with a door icon, a red glowing sphere, and a button labeled "ACK".
- Running Indicator:** A wide green horizontal bar with the text "CYCLE RUNNING" in white.
- Power Button:** A square button with a white circle in the center, located below the green bar.

**iwt**  
TECNIPLAST company



TODAY, WHEN EVERYTHING IS LITERALLY AT FINGERTIPS, IWT DATACLICK BRINGS THE MOST INNOVATIVE SET OF SOLUTIONS FOR YOUR WASHING AREA IN TERMS OF DATA MANAGEMENT AND OPERATOR INTERACTION SYSTEMS

IWT IS THE IDEAL PARTNER FOR THE CARE OF YOUR FACILITY AND FOR THE OPTIMIZATION OF YOUR DAILY WORKLOAD.

THE OPERATOR INTERFACES ARE THE GATEWAY OF USERS, SUPERVISORS AND MANAGERS TO THE EQUIPMENT FEATURES AND POTENTIALITIES.

THE IN-HOUSE TEAM OF DESIGNERS AND SOFTWARE ENGINEERS HAS DEVELOPED A FUTURISTIC PLATFORM, TRANSVERSAL TO THE WHOLE WASHING AND AUTOMATION PORTFOLIO, BASED ON THE MODERN WEB DESIGN PRINCIPLES RESULTING IN AN OUTSTANDING SOLUTION WHERE ARE MAXIMIZED:

- **EASE OF USE:** VERY ICONIC AND SO SIMPLE TO PLAY WITH
- **NAVIGABILITY:** TO FIND YOUR OWN WAY HAS NEVER BEEN SO INTUITIVE
- **INTERACTIVITY:** DATA AND FUNCTIONALITIES ALWAYS A CLICK AWAY
- **PORTABILITY:** YOUR UNIT IN YOUR POCKET THANKS TO REMOTE CONNECTIVITY ON MOBILE DEVICES.

## INDEX



### 4 POLARIS

THE LIGHTHOUSE THAT WILL LEAD YOU IN THE DAILY OPERATIONS ON YOUR SYSTEM

### 6 REALVIEW

WHEN A DEEPER MONITORING AND CONTROLLING OF YOUR CAGE WASH AREA IS REQUIRED





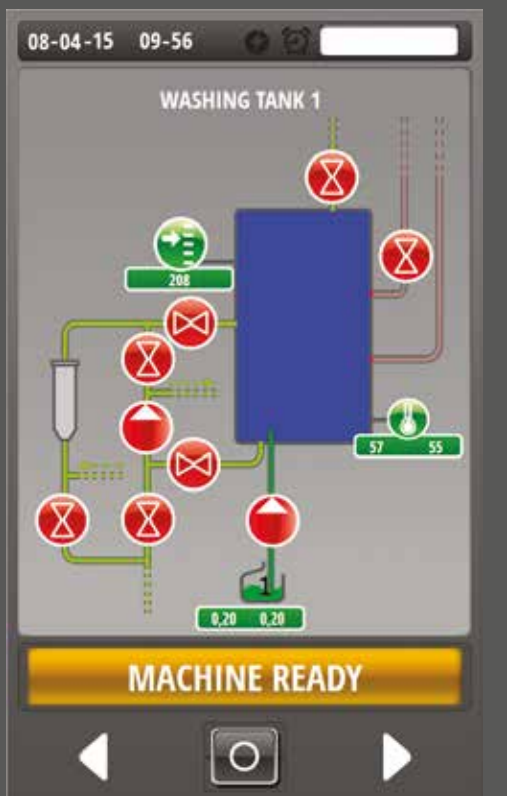
## POLARIS

The lighthouse that will lead you in the daily operations on your system has finally a name, Polaris

An HMI (Human Machine Interface), much more than a simple touch screen, where on top of the intuitive graphic and usability is available, as a standard, a comprehensive set of embedded functionalities and features:

- **LITEVIEW:** smart-phone and table app for remote monitoring and setting (cycle parameters and self-start data), inclusive of a "blackboard" to send messages to the screen in the cage wash area
- **TELESERVICE:** full control process, self-diagnostic logic and live P&ID charts combined with remote connectivity via internet (on customer's permission) for troubleshooting and software upgrades directly from the factory
- **EMETER:** data collection and statistics on the machine consumptions (electricity, water and detergents)
- **USB port:** cycles, alarms and eMeter data downloadable in digital format

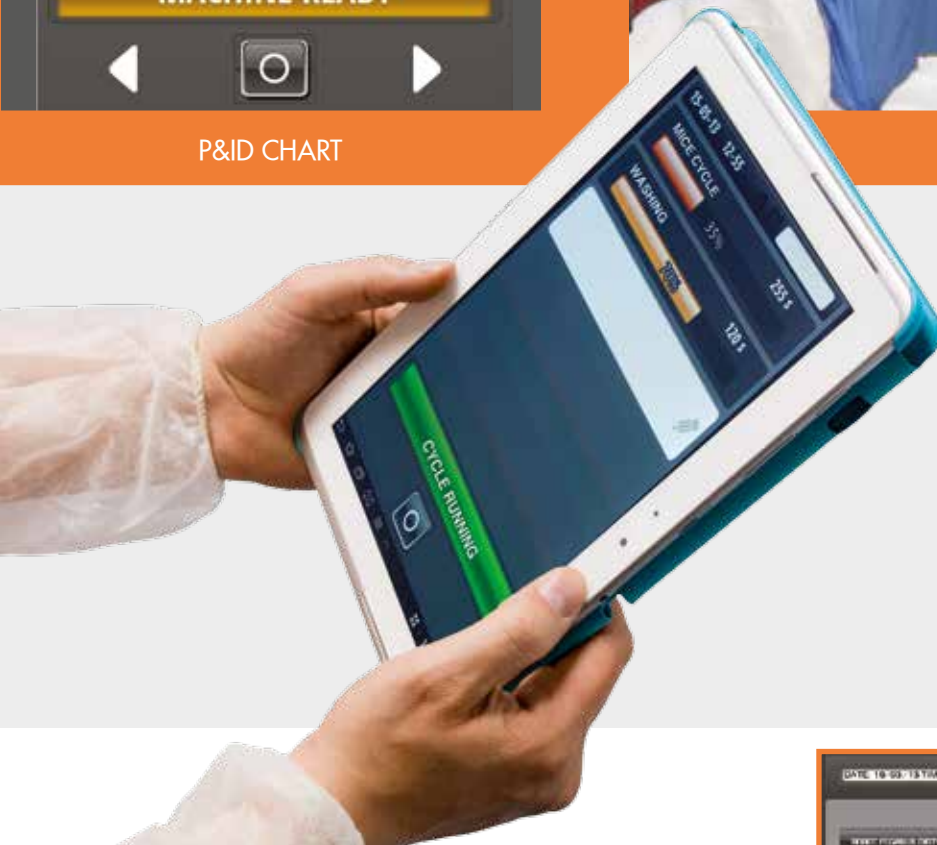




P&ID CHART



USB DATA DOWNLOAD

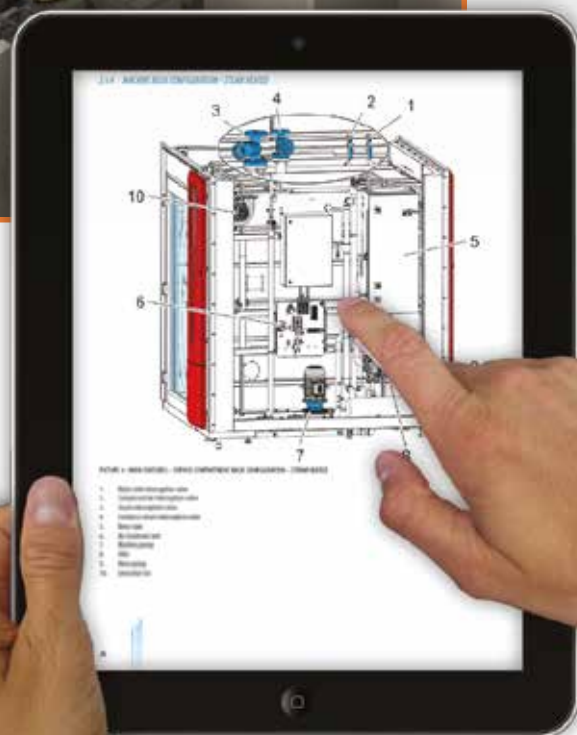
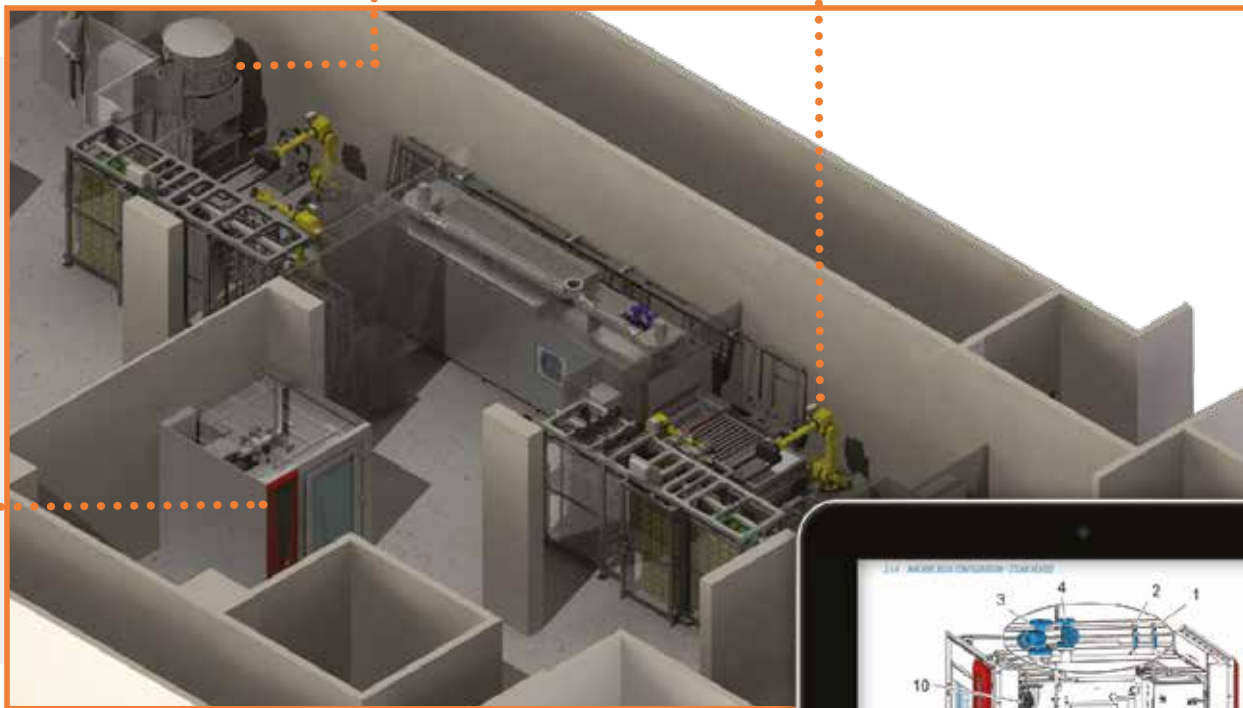


"BlackBoard" allows to send messages from mobile device to touchscreen in the cage wash area

- **SELF-START:** a weekly programmable functionality to automatically switch on and prepare your unit
- **SELF-CLEAN:** a dedicated cycle to rinse chamber, lines and tanks when a drain process is requested
- **WEB-CAMS:** available on robotics to enhance remote visibility and simplify communications through barriers



LIVE STREAMING





DAY	STATUS	TIME	FUNCTION
MONDAY	<input checked="" type="checkbox"/>	8 h 30 m	MICE CAGES
TUESDAY	<input checked="" type="checkbox"/>	7 h 30 m	RAT CAGES
WEDNESDAY	<input type="checkbox"/>	0 h 0 m	
THURSDAY	<input checked="" type="checkbox"/>	8 h 0 m	MICE CAGES
FRIDAY	<input checked="" type="checkbox"/>	9 h 0 m	MICE CAGES
SATURDAY	<input type="checkbox"/>	0 h 0 m	
SUNDAY	<input type="checkbox"/>	0 h 0 m	



## REALVIEW

When a deeper monitoring and controlling of your cage wash area is required, REALVIEW is the right answer

A web based tool, accessible via any browser and any device (smart-phone, tablet or laptop), with further capabilities on top of the standard LITEVIEW ones:

- **real-time** multiple equipment supervision, all your units simultaneously connected
- **data gathering and exporting** in editable or locked format (excel, .pdf)
- **run statistics** about your cycles, alarms, consumptions and productivities
- **quick consult documentation** with manuals, electrical drawings, pneumatic schemes and P&IDs in digital format accessible from everywhere
- **alarms notification via email**: combine the alarms list and addressees upon your needs





COMPANY WITH  
QUALITY SYSTEM  
CERTIFIED BY DNV GL  
= ISO 9001 =

HEADQUARTERS IWT s.r.l. | Tel. +39 0332.96701 · [www.iwtsrl.it](http://www.iwtsrl.it) · E-mail: [info@iwtsrl.it](mailto:info@iwtsrl.it)

Sister Companies

AUSTRALIA/NEW ZEALAND | Tel. + 61 2 8845 6500 · [www.tecniplast.it](http://www.tecniplast.it) · E-mail: [info@tecniplast.com.au](mailto:info@tecniplast.com.au)

CHINA | Tel. + 86 (0)21 50810920 · [www.tecniplast.cn](http://www.tecniplast.cn) · E-mail: [tecniplastchina@tecniplast.it](mailto:tecniplastchina@tecniplast.it)

FRANCE | Tél. +33 (0)4 72 52 94 41 · [www.tecniplast.fr](http://www.tecniplast.fr) · E-mail: [info@tecniplast.fr](mailto:info@tecniplast.fr)

GERMANY | Tel. +49 (0)8805 921320 · [www.tecniplast.de](http://www.tecniplast.de) · E-mail: [info@tecniplast.de](mailto:info@tecniplast.de)

UNITED KINGDOM | Tel. + 44 (0)845 0504556 · [www.tecniplast.it](http://www.tecniplast.it) · E-mail: [info@tecniplastuk.com](mailto:info@tecniplastuk.com)

JAPAN | Tel. +81 (0)3 5770 5375 · [www.tecniplast.it](http://www.tecniplast.it) · E-mail: [info@tecniplastjapan.co.jp](mailto:info@tecniplastjapan.co.jp)

USA | Toll Free: +1 877.669.2243 · [www.tecniplastusa.com](http://www.tecniplastusa.com) · E-mail: [info@tecniplastusa.com](mailto:info@tecniplastusa.com)

CANADA | Toll Free: +1 855.347.8718 · [www.tecniplastcanada.com](http://www.tecniplastcanada.com) · E-mail: [info@tecniplastcanada.com](mailto:info@tecniplastcanada.com)

TO FIND YOUR LOCAL DISTRIBUTOR, PLEASE VISIT [WWW.IWTSRL.IT](http://WWW.IWTSRL.IT)