



# E-Lite

## EM500 single-use Mouse Cage

### *Innovative, Reliable, Flexible*

THE E-LITE EM500 SINGLE-USE MOUSE CAGE IS THE IDEAL SOLUTION FOR SPECIFIC SCENARIOS SUCH AS QUARANTINE, TEMPORARY/STARTUP PROJECTS, DISASTER PLANNING, THE USE OF SPECIFIC AGENTS AS WELL AS FOR EMERGENCY PURPOSES, E.G. WHEN WASHING AREAS AND AUTOCLAVES ARE UNAVAILABLE OR LOCATED FARAWAY.

WITH ITS INNOVATIVE AND USER-FRIENDLY DESIGN, THE E-LITE OFFERS THE FLEXIBILITY AND PRACTICALITY YOU NEED IN CHALLENGING CONDITIONS.

### INNOVATIVE DESIGN

E-lite consists of just two main components:

- A lightweight base
- A top cover with an integrated feeding system



Its unique one-piece top design simplifies handling and reduces setup time.

Manufactured using injection molding technology, E-lite is significantly more durable than standard market alternatives.

Key advantages include:

- Reinforced corners to prevent crumpling during transport
- Stacking notches for easy handling and smooth removal from stacks, preventing jams
- Seamless integration with Emerald Racks for a fully compatible system

With E-lite, facility scaling is effortless. This modular system helps reduce costs, optimize space, and eliminate the need for expensive facility renovations

### FLEXIBILITY & ERGONOMICS

E-lite is designed to enhance workplace efficiency and user comfort:

- Lightweight construction: Made of thin-layer polypropylene for easy handling
- Improved ergonomics: Reduces physically demanding tasks and minimizes repetitive strain injuries
- Quick setup: Delivered pre-bedded, reducing preparation time

## ANIMAL WELFARE

E-lite prioritizes animal welfare by offering an optimal living environment that supports the health and comfort of research animals.

Key benefits include:

- Controlled airflow for a stable environment
- Low noise levels to reduce animal stress
- Filtered air inlet & outlet for clean and controlled airflow
- Double-bagged packaging for maximum contamination control

These features contribute to a stress-free setting, ensuring better research outcomes.

Moreover, each package comes labelled with unique lot numbers for easy tracking of irradiation certificates.



## SUSTAINABILITY

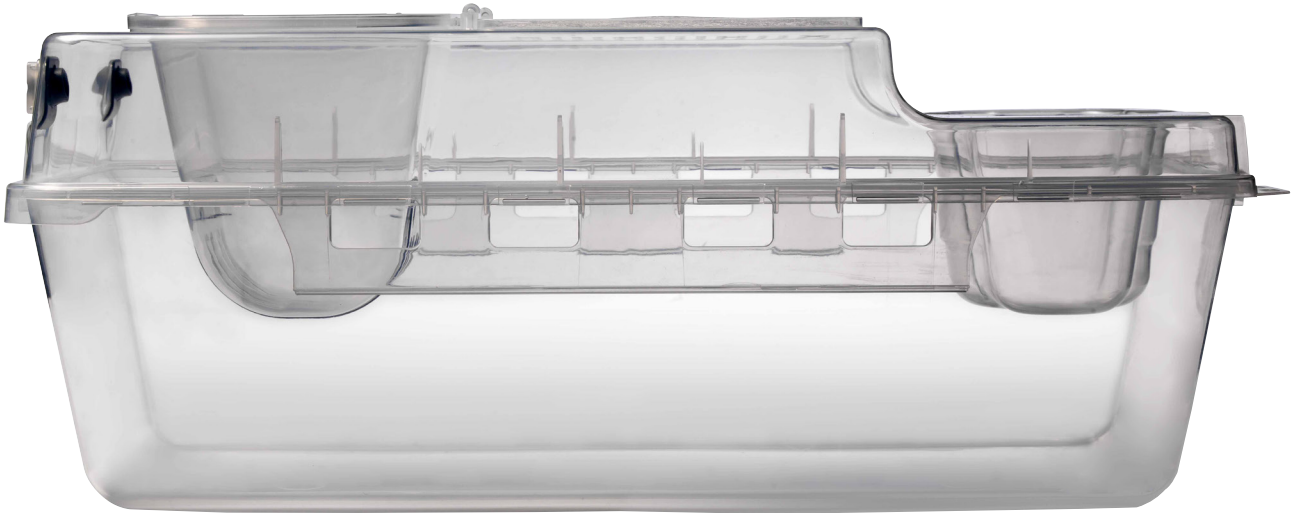
Sustainability is at the core of the E-lite EM500 system.

For facilities committed to zero waste, Tecniplast is your partner to support the E-lite adoption by reducing the overall waste footprint.

The E-lite system makes it easy for laboratories to align their operations with sustainable practices while maintaining efficiency.



# Key Features



The Elite Single-use Caging System includes a range of innovative features designed to streamline your facility's workflow:

- Space-Saving Design: Cage bottoms nest in compact stacks of 25, maximizing storage space
- Research-Ready Caging: Each cage is delivered ready for immediate use, ensuring quick setup
- Lightweight Construction: Lightweight design improves handling and ergonomics
- Extended 14-Day (and more) Cage Changes: the efficient ventilation supports extended cage change intervals, reducing labor requirements
- End-to-end solution: Single use solution minimizes the need for cleaning and maintenance
- Closed-Loop Recycling Service: Recycle plastic and compost bedding with ease, supporting your zero-waste goals

 **TECNIPLAST**



## HEADQUARTERS

**ITALY** | Tel. +39 0332 809711 · [www.tecniplast.it](http://www.tecniplast.it) · E-mail: [tecnicom@tecniplast.it](mailto:tecnicom@tecniplast.it); [venditeitalia@tecniplast.it](mailto:venditeitalia@tecniplast.it)

## SISTER COMPANIES

**AUSTRALIA/NEW ZEALAND** | Tel. + 61 2 8845 6500 · [www.tecniplast.it](http://www.tecniplast.it) · E-mail: [info@tecniplast.com.au](mailto:info@tecniplast.com.au)

**CHINA** | Tel. + 86 (0)21 50810920 · [www.tecniplast.cn](http://www.tecniplast.cn) · E-mail: [tecniplastchina@tecniplast.it](mailto:tecniplastchina@tecniplast.it)

**FRANCE** | Tel. +33 (0)4 72 52 94 41 · [www.tecniplast.fr](http://www.tecniplast.fr) · E-mail: [info@tecniplast.fr](mailto:info@tecniplast.fr)

**GERMANY** | Tel. +49 (0)8805 921320 · [www.tecniplast.de](http://www.tecniplast.de) · E-mail: [info@tecniplast.de](mailto:info@tecniplast.de)

**UNITED KINGDOM** | Tel. + 44 (0)345 0504556 · [www.tecniplast.it](http://www.tecniplast.it) · E-mail: [info@tecniplastuk.com](mailto:info@tecniplastuk.com)

**SWITZERLAND** | Tel +41 (0)81 750 31 40 · [www.tecniplast.ch](http://www.tecniplast.ch) · Email: [info@tecniplast.ch](mailto:info@tecniplast.ch)

**JAPAN** | Tel. +81 (0)3 5770 5375 · [www.tecniplast.it](http://www.tecniplast.it) · E-mail: [info@tecniplastjapan.co.jp](mailto:info@tecniplastjapan.co.jp)

**USA** | Toll Free: +1 877.669.2243 · [www.tecniplastusa.com](http://www.tecniplastusa.com) · E-mail: [info@tecniplastusa.com](mailto:info@tecniplastusa.com)

**CANADA** | Toll Free: +1 855.347.8718 · [www.tecniplastcanada.com](http://www.tecniplastcanada.com) · E-mail: [info@tecniplastcanada.com](mailto:info@tecniplastcanada.com)