





DISCOVER THE WORLD'S MOST INNOVATIVE PRODUCT LINE FOR ZEBRAFISH, XENOPUS OR OTHER AQUATIC SPECIES FOR FACILITIES OF ANY SIZE!

TECNIPLAST IS THE IDEAL PARTNER AT YOUR SIDE FOR AQUATICS PRODUCTS.

WE ARE A FULL-SERVICE AQUATIC RESEARCH EQUIPMENT PROVIDER, FROM START TO FINISH. OUR COMPLETE IN-HOUSE CAPABILITIES ALLOW US TO ENSURE QUALITY CONTROL IN THE DESIGN, ENGINEERING AND MANUFACTURING OF OUR PRODUCTS.

FROM BENCHTOP TO FULLY CUSTOMIZED SYSTEMS, FROM LAYOUTING TO INSTALLATION, TRAINING AND BIO-SERVICE: WE CAN ASSIST YOU WITH ANY PROJECT YOU MIGHT HAVE IN MIND.

THAT'S THE REASON WHY TECNIPLAST IS NOT ONLY A SUPPLIER, BUT A REAL PARTNER, WITH A FULL TEAM OF AQUATIC EXPERTS.

WE ARE AT YOUR SIDE TO IMPROVE DAILY ACTIVITIES, ENSURING BETTER SCIENTIFIC OUTCOMES!

INDEX



5 HOUSING

TANKS & ACCESSORIES
LOGISTICS • BENCHTOP
ACTIVE BLUE • WTU & CLS

BREEDING 13

TANKS • iSPAWN-S
iSPAWN



17 FEEDING

TRITONE

SPECIAL APPLICATIONS 21

GENOTYPING
TOXICOLOGICAL
SENTINEL • PHOTOPERIOD



25 WASHING

• CALYPSO
• ATLANTIS

AMPHIBIANS 29

TANKS • STAND ALONE
MULTILINKING • CLS



HOUSING SOLUTIONS



HOUSING TANKS & ACCESSORIES



BENCHTOP



ACTIVE BLUE STAND ALONE



MULTILINKING WTU & CLS SYSTEMS

TECNIPLAST AQUATIC SOLUTIONS FOR ZEBRAFISH HOUSING ARE THE RIGHT ANSWER TO YOUR NEEDS.

WHETHER IT IS A RENOVATION, A BUILDING EXPANSION OR A BRAND NEW FACILITY, WE HAVE THE FLEXIBILITY TO MATCH YOUR RESEARCH NEEDS.

FROM BENCHTOP TO THE LARGEST CUSTOMIZED LIFE SUPPORT SYSTEMS... WE HAVE WHAT YOU ARE LOOKING FOR!

Active Siphon System for enhanced debris removal

WE PROMOTE OUR CLEAN TANK TECHNOLOGY BY USING OUR ACTIVE SIPHON SYSTEM, ALONG WITH TECNIPLAST UNIQUE TANK SHAPE AND COLOR.



■ 1.1L TANK



■ 3.5L TANK

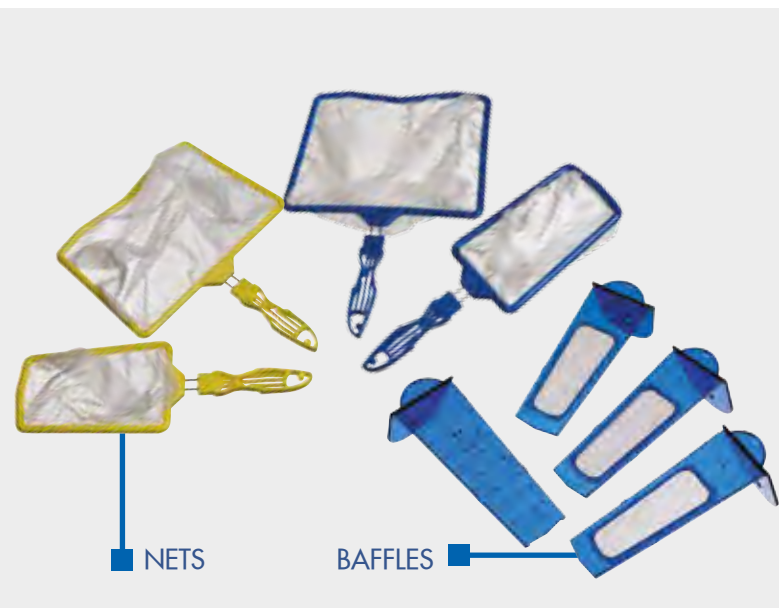


■ 8L TANK

TANKS

INNOVATIVE TECHNOLOGY FOR AUTOCLAVABLE HOUSING SOLUTIONS

- Tank capacity 1.1L, 3.5L and 8.0 L
- Tank divider for 1.1 and 3.5L tanks
- Innovative tank color & shape with Clean Tank Technology
- Tank body and lid molded in certified blue coloured plastic to reduce the growth of algae at tank level
- V-channel bottom, rounded corners, sloped from front to back – funnels debris to suction point of the siphon for ultimate cleaning ability
- Tanks and all components are autoclavable and available in certified and approved polycarbonate or polysulfone



ACCESSORIES

A SELECTION OF AUTOCLAVABLE ITEMS
TO COMPLETE YOUR TECNIPLAST TANKS

- Autoclavable nets (1.1, 3.5 and 8L versions)
- Multiple life stage baffles
(300, 500 and 800 micron)

LOGISTICS

FULL RANGE OF EQUIPMENT
TO EASE YOUR DAILY FACILITY ACTIVITIES

- Breeding trolley
- Tank transport trolley
- Movable shelf
- Drain receptacle



BENCHTOP

COMPACT SELF-STANDING UNIT
FOR SMALL LABS AND QUARANTINE SYSTEMS

Product features:

- Flexible to hold 3.5 and/or 8L tanks or any configuration in between
- Complete filtration system and great disinfection rate
- Full monitoring and automatic buffering included
- Automatic water exchange; cooling system as an option
- Painted 316L Stainless Steel rack structure with adjustable rubbered feet and tanks identification

ACTIVE BLUE STAND ALONE

UNMATCHED SELF-CLEANING
MECHANICAL DRUM FILTER AT RACK LEVEL!

Product features:

- Mechanical drum filtration for reduced maintenance
- The highest UV disinfection rate on the market
- Touch screen and advanced monitoring system with remote capabilities
- No mechanical consumables needed and reduced running costs
- USB port to download alarms and data logs



Rack Systems: designed with intention

SUPERIOR RACK STRUCTURE

TECNIPLAST RACKS ARE MADE OF COATED 316L STAINLESS STEEL WHICH MAKES THEM EVERLASTING.

FLEXIBLE DESIGN

STAND ALONE OR MULTILINKING RACKS ARE AVAILABLE IN DIFFERENT CONFIGURATIONS TO MEET YOUR FACILITY AND HOUSING NEEDS.

UNIQUE WATER DELIVERY INLET VALVE

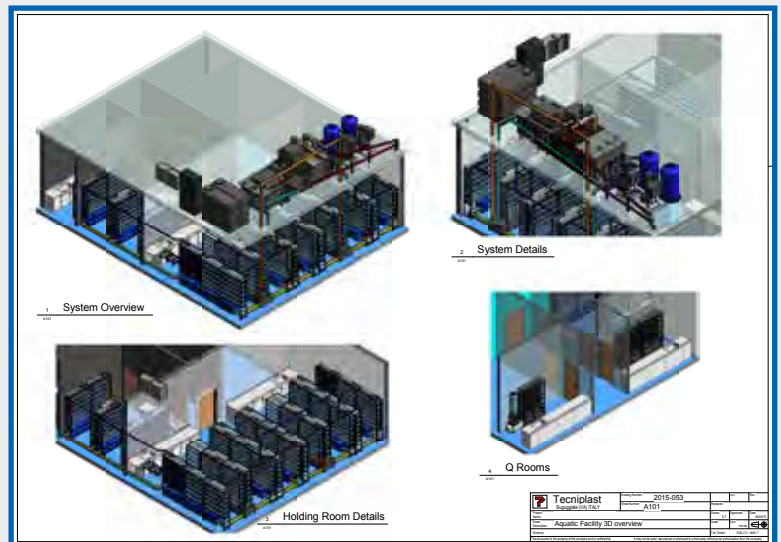


- FRONTAL "PUSH AND PULL" NOZZLE WITH BACK VALVE FOR FINE-TUNE INLET FLOW CONTROL TO PREVENT ACCIDENTAL WATER LOSSES
- EACH VALVE HAS A VISUAL INDICATOR CONFIRMING DELIVERY AT A GLANCE AND WARNING ABOUT STATIC TANKS



An offer that makes
the difference :
Facility 3D layouting

THANKS TO OUR DEDICATED AND SKILLED PROJECT MANAGEMENT DEPARTMENT, WE CAN DEVELOP 3D FACILITY LAYOUTING TO BEST MEET OUR CUSTOMERS' REQUIREMENTS. THIS VERY IMPORTANT FIRST PROJECT STEP PROVIDES YOU WITH THE RENDERING OF HOW YOUR FACILITY WILL LOOK LIKE AFTER INSTALLATION.



MULTILINKING SYSTEM WITH WATER TREATMENT UNIT (WTU)

PRE-BUILT COMPACT SOLUTION FOR MEDIUM LABS,
EASY TO INSTALL AND MAINTAIN

- Flexible solution from one up to 6 racks (even at a later stage)
- Monitoring and automatic dosing included
- Water treatment unit includes fine mechanical filter, carbon filtration and high UV disinfection
- Pre-built compact filtration unit with reduced footprint
- Pre-filtration and biological filtration at rack level (racks sump tanks)
- Variable Frequency Driven (VFD) submerged recirculating pumps for optimal water flow control
- Pre-installed back-up pumps for redundancy reasons
- Pressure reader at mechanical filter level
- Pressure equalizer for constant pressure at tank level
- Automatic water exchange at precise intervals (every hour)
- Water Treatment Unit suitable for standard or customized racks
- Suitable for 3.5-8L or 1.1L tanks, depending on configuration
- Cooling system option available



STANDARD PALLETIZED CLS

FROM FEW RACKS UP TO 15 RACKS

- Pre-built compact CLS including fine mechanical filter, carbon filter, UV disinfection and recirculating pumps
- Two variable frequency driven pumps for redundancy reasons
- Pressure reader at mechanical filter level
- Pressure equalizer for constant pressure at tank level
- Flow meter to monitor water flow in the system
- Mechanical drum filtration (optional)
- Advanced monitoring system with remote capability

FULLY CUSTOMIZED CLS

MEDIUM/LARGE FACILITIES AND TAILOR-MADE SOLUTIONS

- Customized filtration on Customer's and building needs
- Variable Frequency Driven recirculating pumps (VFD)
- Built in redundancy
- Reduced maintenance through self cleaning solutions
- Accurate automatic dosing of buffering solutions
- Pressure equalizer for consistent and best housing conditions
- Flow meter to monitor water flow in the system
- Gradual and automatic water exchange
- Advanced monitoring system with remote capability

BREEDING SOLUTIONS



BREEDING TANKS



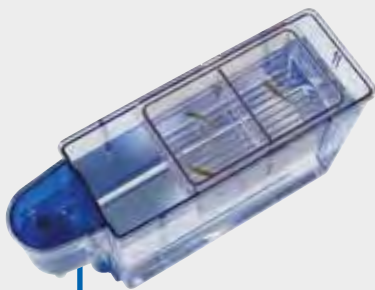
iSPAWN-S



iSPAWN

STANDARD BREEDING TANKS OR LARGE BREEDING EMBRYO COLLECTION SYSTEMS: WHATEVER YOUR REQUIREMENTS ARE, WE HAVE THE SOLUTION THAT MEETS YOUR NEEDS.

DESIGNED TO MINIMIZE RESEARCHERS' INVESTMENTS IN LABOR AND SPACE, TECNIPLAST SOLUTIONS ALLOW TOP OUTCOMES AND UTMOST EASE OF USE TO IMPROVE BREEDING EFFICIENCY IN THE FULL RESPECT OF ZEBRAFISH BIOLOGY AND BEHAVIOUR.



ON-SYSTEM BREEDING



0.7L



1L

BREEDING TANKS

INNOVATIVE TECHNOLOGY FOR IMPROVING ZEBRAFISH BREEDING

- Different volumes available to satisfy any need
- Each breeding tank includes: solid external tank, internal tank with perforated bottom, divider and lid
- Suitable for external breeding or on-system breeding (only for 1L breeding tanks)
- 0.7L breeding tanks are designed for pair breeding
- 1L breeding tanks for small groups
- 1.7L sloped breeding tank for larger groups. Long beach area, gravellike and opaque bottom for enhanced natural mating behaviour

Zebrafish like it
on the Beach!



1.7L SLOPED

The tank everybody is talking about!

"We've seen a significant increase in crossing success..."

"At Washington University we've been using the sloped 1.7 liter tank for over 6 months. We have seen a significant increase in crossing success, when compared to individually size breeder tanks. Especially for troublesome lines, that we have had difficulty crossing. It also saves time, by setting up one tank compared to 4-5 individual crosses"

*Stephen Canter, Zebrafish Facility Manager
Washington University of St. Louis, USA*

"...It makes breeding Zebrafish easier..."

"The new tank design facilitates Zebrafish embryo production by incorporating a depth gradient within the tank and recreating conditions that promote natural spawning behaviors. This makes breeding Zebrafish easier by eliminating the need to manually slant the inner tank of the other designs every morning"

*Jim Burris, Operations Manager
Duke University, USA*

"...the best spawning tank..."

"It seems the new tank was the best spawning tank of the whole lot yesterday"

*Alhad Mahagaonkar, Zebrafish Facility Manager
The University of Auckland, New Zealand*

"...Fish that NEVER lay, actually laid a ton!"

"We have homozygous viable that breed horribly. So it makes for a slow experimentation with these guys... A couple of students in the lab tried them and the fish that NEVER lay, actually laid a ton! So now, they're sold and here I am needing to buy some..."

*Sarah Kucenas, Associate Professor of Biology
University of Virginia, USA*

"I would say that this is the best tank existing..."

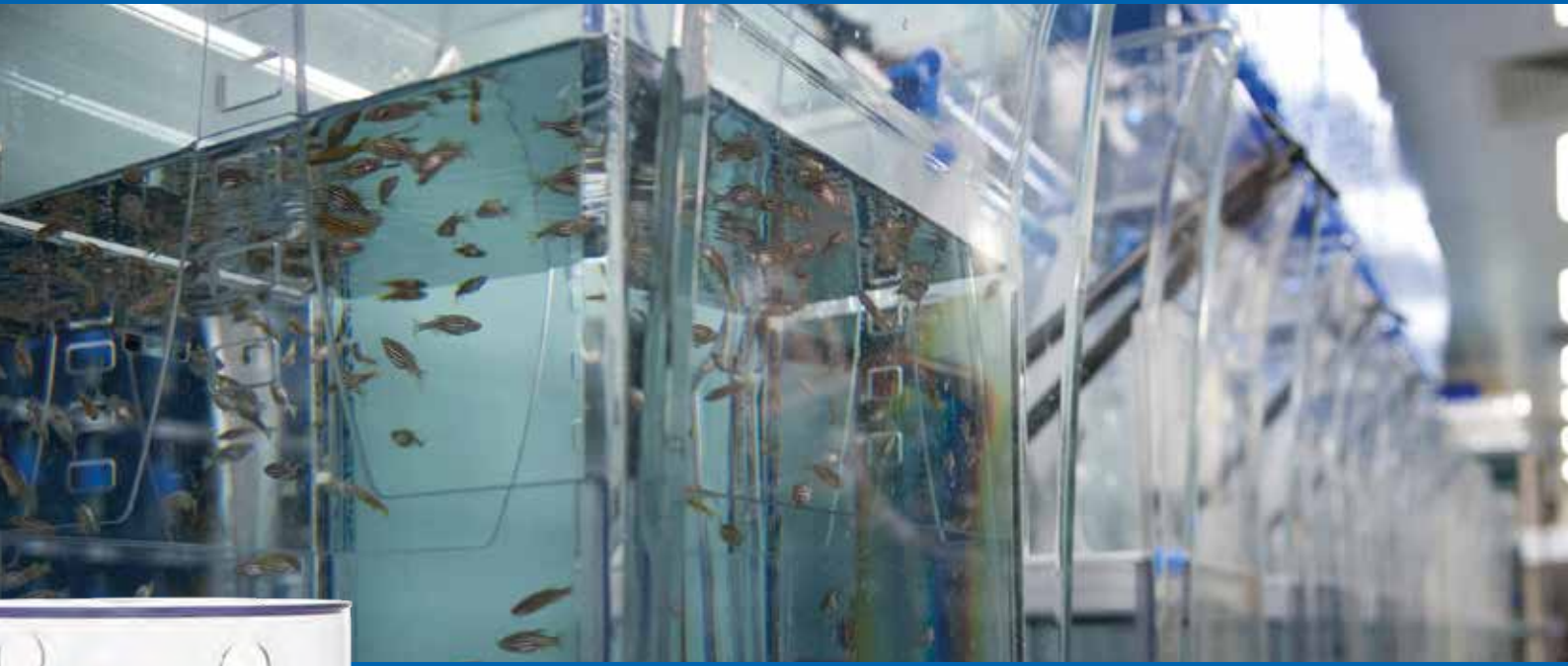
"Users really like them. I would say that it is the best breeding tank existing. It is very versatile and works well for pairs and multiple fish"

*Jan Kaslin, PhD, Group Leader Australian Regenerative Medicine Institute
Monash University, Clayton, Australia*

"...The beach tank means better animal welfare..."

"The beach tank is really good news. We can put more water into the beach tank than we do in our existing ones. To obtain a shallow gradient in standard tanks, we have to keep the water level quite low and then sit the container on the edge of a raised lip. [The beach tank] means a better animal welfare for the fish, which can spawn in water with a much lower concentration of metabolites"

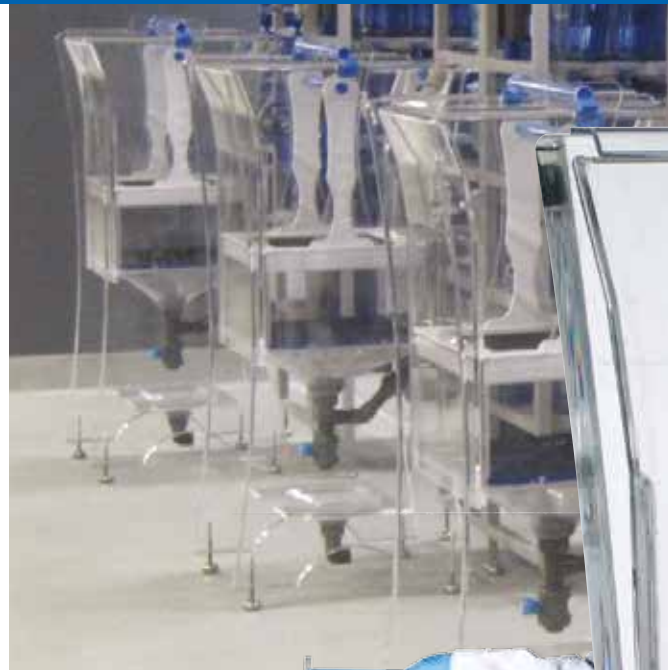
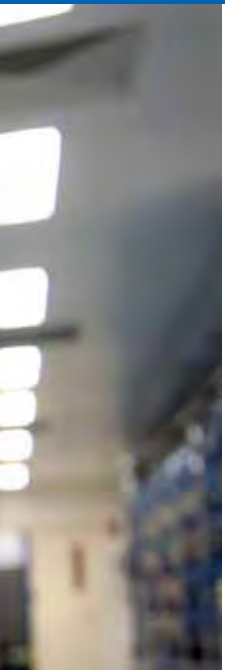
*Bruce Newell, Aquarium Technician
Deakin University, Melbourne, Australia*



ISPAWN-S

A UNIQUE SOLUTION FOR EVERY LAB SIZE.
FITS ON A BENCHTOP. EASY TO USE.

- 13L water capacity to breed up to 20 couples of fish
- Designed to efficiently collect a large number of synchronized embryos in a brief and defined window of time, with minimal labor and space requirements
- Static or recirculating setup
- Matches the natural spawning of Zebrafish and promotes fish mating behaviour



ISPAWN

FOR MAXIMUM AND MORE EFFICIENT
COLLECTION OF LARGE NUMBER OF EMBRYOS

- 60L vessel to house up to 200 fish
- Designed by Zebrafish Researchers and scientifically proven
- Static or recirculating setup
- Matches the natural spawning of Zebrafish and promotes fish mating behaviour

AUTOMATIC FEEDING SYSTEM



TRITONE

TRITONE, THE ONE AND ONLY
AUTOMATED DIET DELIVERY SYSTEM
FOR ZEBRAFISH LABS.

TRITONE REDUCES:

- FISH FEEDING COSTS
- HIGH VARIABILITY ASSOCIATED WITH "MORE THAN ONE PERSON" FEEDING

TRITONE IMPROVES:

- HYGIENE AT TANK LEVEL
- ERGONOMICS DURING DIET DISTRIBUTION
- SYSTEM WATER QUALITY



TRITONE

FOR LIQUID AND MULTIPLE DRY DIET DISTRIBUTION

- Able to distribute multiple dry diets (up to 4 different pellet sizes) as well as liquid live diet
- Standardizes the quantity of diet distributed avoiding the variability due to different operators
- Minimizes the amount of diet residues for better hygiene
- Improves ergonomics avoiding the use of ladders
- More precise dosing turns into a better water quality avoiding the risk of overfeeding



TRITONE ACCESSORIES

DIET LABELS FOR TANKS

- Electrostatic, glue-free labels
- Available in five different colors - green, yellow, red, blue and white (optional) - corresponding to the food dispensers colors
- Ink ribbon and thermal transfer printer available

FOOD DISPENSERS

- Available in four different colors (green, yellow, red, blue) corresponding to the diet colored tank labels
- Entirely made of plastic
- Reliable, easy to disassemble, refill and wash
- Autoclavable
- Great diet visibility
- No clogging

SPECIAL APPLICATIONS



GENOTYPING SOLUTIONS



TOXICOLOGICAL SOLUTIONS



SENTINEL SOLUTIONS



PHOTOPERIOD SOLUTIONS

WE LISTEN TO YOUR NEEDS THROUGH SPECIAL APPLICATIONS AND SOLUTIONS TO MEET ALL RESEARCHERS' REQUIREMENTS



ZEBTEC GENOTYPING SOLUTIONS

OPTIMAL WATER QUALITY AFTER FIN CLIPPING
SINGLE FISH HOUSING WHILE WAITING FOR PCR RESULTS

- Designed to provide fish with the optimal water quality after fin clipping
- Dedicated 0.7lt tanks with a gentle water recirculation, lid and divider (two fish each tank)
- Available with lid and divider
- Each tank is identified by letters and numbers
- Single fish housing while waiting for PCR results
- 12 sliding trays with 12 tanks each for a total number of 288 fish corresponding to three 96 well plates
- Tanks are located in specific trays inserted in dedicated frames
- If needed frames or trays can be removed as well
- Dedicated tray inlet valves to guarantee water recirculation through tanks
- Painted 316L Stainless Steel rack structure and tanks identification
- Available for Stand Alone, multilinking, palletized or fully customized systems





ZEBTEC STAND ALONE TOXICOLOGICAL RACK

TO TEST DRUGS OR COMPOUNDS IN INDIVIDUAL TANKS

- Designed as a flow-through (single pass) system without recirculation of water
- Three rows of tanks for a total of 30 tanks with dedicated push & pull valve
- Rack equipped with three supply solenoid valves to separately open/close the water flow in each row: refreshes a pre-set small water volume at specific intervals to provide fish with the ideal water conditions
- The automatic water exchange inside the tanks can be programmed as "single" or "continuous exchange" over a specific timing
- Each tank is equipped with a drain overflow pipe to maintain constant volume of water
- Two buffering tanks and two buffering pumps for ideal pH and conductivity of water
- Monitoring system for temperature, pH and conductivity in the sump. The ideal water parameters and alarm thresholds are set in the touch screen
- Water parameters monitored 24h/day and displayed on the touchscreen



SENTINEL RACK

- Optional rack with 10 tanks of 3,5 liters
- Smaller version with 2 tanks available
- Racks feature a dedicated yellow color
- Preventive routine evaluation for specific pathogens
- Sentinel fish are exposed to mechanically filtered water before being UV disinfected
- The rack has a dedicated water supply line and a water outlet with pre-filter
- Also available for stand alone racks

PHOTOPERIOD CABINETS

- Single or multiple rows closed cabinets to provide fish with different day-light cycles
- Sealed environment with no influence of room light
- Entirely made of plastic with sliding doors
- LED light strips on top of each single housing tank
- Dawn and dusk cycles included
- No heat transfer to water
- Dedicated touch screen to manage light cycles per different rows

WASHING SOLUTIONS



CALYPSO



ATLANTIS

TECNIPLAST-IWT EQUIPMENT GREATLY SUPPORT RESEARCHERS BY AUTOMATING DAILY OPERATIONS.

CALYPSO AND ATLANTIS FEATURES A TURN-KEY PROCESSES THAT ELIMINATES ALGAE AND BIOFILM WITHOUT THE NEED OF ANY PRE-TREATMENT.



CALYPSO

PROVEN PROCESS FOR EFFECTIVE ALGAE AND BIOFILM REMOVAL

- Guarantee of perfect results due to accurate coverage, multiple rinses including final rinse with RO water
- No need of tanks pre-treatment: automatic diet residues removal during the pre-washing phase
- Lower running costs and high detergent savings (up to 80% compare to previous generation models)
- Fits tight spaces thanks to the reduced operational footprint - e.g. sash window door design; on-board compartment for detergents storage
- Maximum flexibility: loading shelves, at ergonomic height, with tool-free setting system to process a variety of aquatic accessories
- Easy installation:
 - only electricity and water required - no exhaust needed
 - wall-to-wall installation capability and full frontal access for maintenance
 - compact dimensions for easy rigging - fits std doors





New design!
Compact dimensions
to fit
any size
operations

W: 1350mm - 53"
H: 1950mm - 77"
D: 835mm - 33"



FULL FRONTAL
ACCESSIBILITY

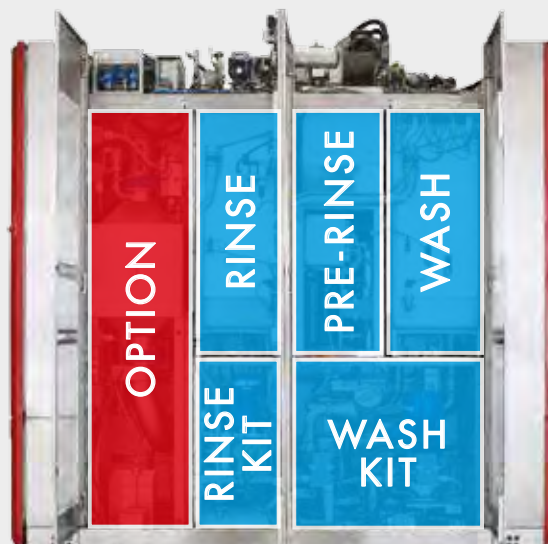




ATLANTIS

AQUATIC TANKS AND ACCESSORIES LARGE SIZE WASHER

- No need for manual scrubbing or pre-treatment thanks to Atlantis effective algae and biofilm removal
- Perfect results are ensured through an engineered cycle composed by pressure, accurate coverage, detergents mix and multiple rinses
- High loading capacity: up to 184 tanks/cycle (1.1L)
- Maximum flexibility with presentation racks and crates specifically designed to process all aquatic items
- Full process control and automatic detergent management via three on-board dosage pumps
- Validated pre-set cycles



Proven process, reliable solution for your large scale operations!

AMPHIBIANS



TANKS



STAND ALONE
RACK



MULTILINKING
SYSTEM



STANDARD
PALLETIZED CLS



FULLY
CUSTOMIZED CLS

TECNIPLAST AMPHIBIAN
HOUSING SYSTEMS:

- SUPERIOR MATERIALS
- UNIQUE TECHNICAL FEATURES
- USER-FRIENDLY DESIGN
- MONITORING SYSTEM WITH
AUTOMATED MAINTENANCE REMINDERS
- RACK AND TANKS FLEXIBILITY



STAND ALONE RACKS

- Double sliding lid for easy access, rounded corners, brownish color; automatic water exchange
- Double standpipe at tank level with drain cover (optional)
- Push-and-pull valve with fine-tune flow control
- Pre-filter pad, submerged biological filter, fine mechanical pleated cartridge, carbon bag, UV disinfection
- Monitoring system with probes and Touch Screen
- Buffering system for temperature, pH and Conductivity
- Painted 316L Stainless Steel rack structure and tanks identification

MULTILINKING SYSTEM

- Flexible solution with Water Treatment Unit managing from one up to 4 racks with automatic water exchange
- Double sliding lid, rounded corners, brownish color
- Variable Frequency Driven (VFD) submerged recirculating Pumps for optimal water flow control
- Push-and-pull valve with fine-tune flow control
- Pre-filter pad, submerged biological filter, fine mechanical pleated cartridges, carbon bag and UV disinfection
- Monitoring system with probes and Touch Screen
- Buffering system for temperature, pH and Conductivity
- Painted 316L s/s rack structure and tanks identification

TANKS

QUALITY AND FLEXIBILITY

- Available in 13.4L and 27L sizes
- Each tank meets or exceeds housing guidelines while providing excellent design features
- Tank color provides optimal environment for animal health and reduces algae growth
- Double sliding lid with smooth corners to prevent injuries
- Tanks can be easily accessed while on system through the sliding lid feature
- Internal double standpipe design for routine debris removal and easy tank draining while on system
- Each tank can accommodate all life stages with available drain attachments (drain cover)



STANDARD PALLETIZED CLS

- From 4 up to 24 racks
- Fine mechanical and carbon filtration; high UV disinfection
- Pre-filtration and biological filtration at rack level
- Variable Frequency Driven submerged recirculating Pumps
- Recirculating Pumps back-up
- Pressure equalizer for constant pressure at tank level
- Flow meter to monitor water flow in the system
- Automatic water exchange at precise intervals
- Monitoring and automatic dosing included
- Advanced monitoring system with remote control

FULLY CUSTOMIZED CLS

- For large and customized flexible solutions
- CLS includes customized filtration based on Customer's and building requirements; suitable for large labs
- Variable Frequency Driven submerged recirculating Pumps
- Recirculating Pumps redundancy
- Pressure equalizer for constant pressure at tank level
- Flow meter to monitor water flow in the system
- Automatic water exchange at fixed intervals (every hour)
- Technical sump includes monitoring and dosing systems
- Advanced monitoring system with remote control

COMPANY WITH
QUALITY SYSTEM
CERTIFIED BY DNV GL
= ISO 9001 =

COMPANY WITH
ENVIRONMENTAL SYSTEM
CERTIFIED BY DNV GL
= ISO 14001 =

 **TECNIPLAST**
i n n o v a t i o n t h r o u g h p a s s i o n

HEADQUARTERS

ITALY | Tel. +39 0332 809711 · www.tecniplast.it · E-mail: tecnicom@tecniplast.it; venditeitalia@tecniplast.it

SISTER COMPANIES

AUSTRALIA/NEW ZEALAND | Tel. + 61 2 8845 6500 · www.tecniplast.it · E-mail: info@tecniplast.com.au

CHINA | Tel. + 86 (0)21 50810920 · www.tecniplast.cn · E-mail: tecniplastchina@tecniplast.it

FRANCE | Tél. +33 (0)4 72 52 94 41 · www.tecniplast.fr · E-mail: info@tecniplast.fr

GERMANY | Tel. +49 (0)8805 921320 · www.tecniplast.de · E-mail: info@tecniplast.de

UNITED KINGDOM | Tel. + 44 (0)845 0504556 · www.tecniplastuk.com · E-mail: info@tecniplastuk.com

JAPAN | Tel. +81 (0)3 5770 5375 · www.tecniplast.it · E-mail: info@tecniplastjapan.co.jp

USA | Toll Free: +1 877.669.2243 · www.tecniplastusa.com · E-mail: info@tecniplastusa.com

CANADA | Toll Free: +1 855.347.8718 · www.tecniplastcanada.com · E-mail: info@tecniplastcanada.com

TO FIND YOUR LOCAL DISTRIBUTOR, PLEASE VISIT WWW.TECNIPLAST.IT

