

- **ONE 2 ONE** control of each Air Handling Unit via portable device (tablet or smartphone)
- **GUARDIAN**: remote control of all AHUs in the facility with alarm notification and data collection for intuitive reports



Today portable devices and remote control are widely used in several applications, everyone likes to deal with these devices and the advantages coming from their use are countless.

The **GATEWAY** is designed to be installed on the Air Handling Units, compatible with:

- Smart Flow
- Easy Flow
- Sky Flow
- Touch Slim Plus
- ISOcage N
- ISO cage P

and enables two functions:

ONE 2 ONE controls the Air Handling Unit via any portable device just using a web browser:

- Only **one portable device** can be used to **control** each and **every Air Handling Unit** in the facility.
- Full compatibility: **the system works with any operative system or device.**

GUARDIAN allows for the **complete remote control** of all blowers in the facility, giving the several powerful possibilities:

- Monitor, check and control all machines from the office.
- Forward alarm notifications, according to the preferences and timing: **maximum safety.**
- Create data report for each or several machines, choosing the parameters to export: **enhanced data monitoring.**
- Export of daily data.
- Track and locate any Air Handling Unit preventing any possible mistaken set configuration: **improved control and safety.**



Gateway - The Way to Remote Control



ONE 2 ONE

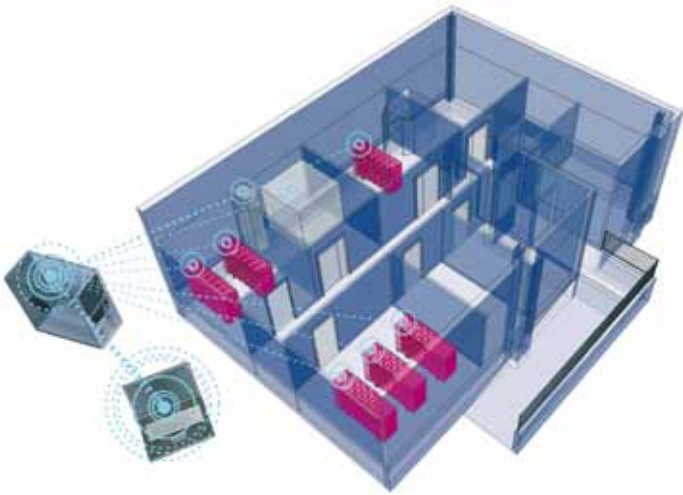


One-to-one control of the AHU via any portable device



ONE 2 ONE settings page

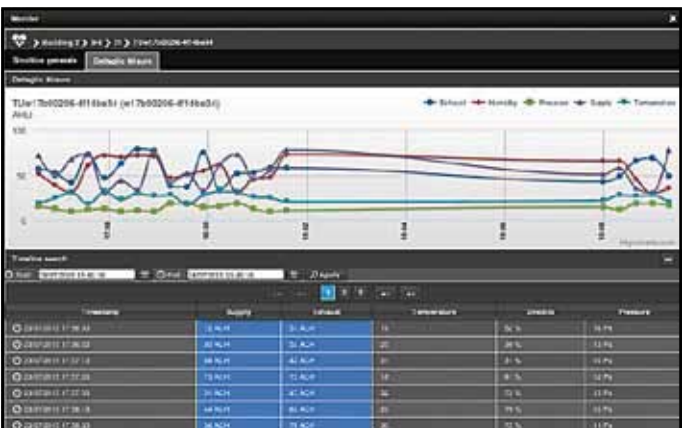
GUARDIAN



Remote control of all AHUs installed in the facility, with the possibility of creating reports and forwarding alarm notifications



GUARDIAN home page



GUARDIAN allows to create reports and charts of the monitored parameters

TECHNICAL SHEET

GATEWAY

External Dimensions (with support plates) (L x W x H):
145 x 79 x 88 mm / 57,08 x 31,1 x 34,64 mm

Connection with AHU:

Through serial cable RJ45/RS485
AHU is pre-arranged for this connection

AHU requirements:

Manufactured from 2016, otherwise Firmware Upgrade is necessary

ONE 2 ONE

WiFi standard:

802.11g, 2.4GHz

WiFi protection:

WPA, WPA2 (optional)

Portable device requirement:

Possibility to use web browser

GUARDIAN requirements

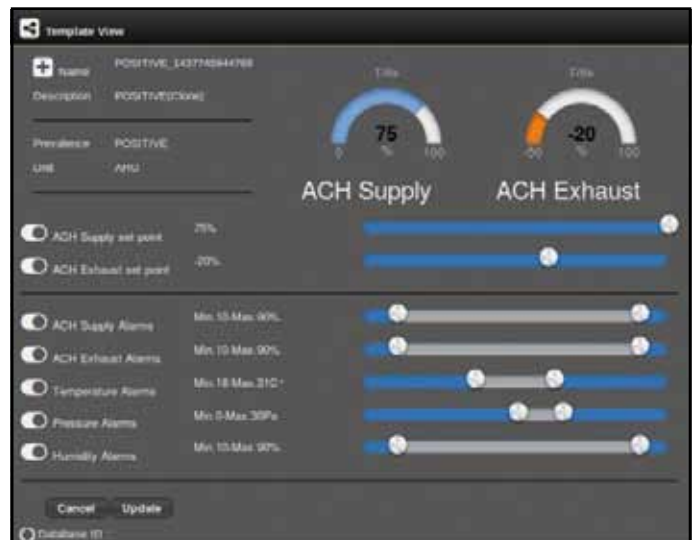
SERVER	Minimum hardware specifications (from 1 to 20 units)	Recommended hardware specifications (less than 100 units)	Recommended hardware specifications (more than 100 units)
Processor	Pentium or compatible CPU	Pentium i5 or above or compatible CPU	Pentium i7 or above or compatible CPU
RAM Memory	4 GB	8 GB or 16 GB	16 GB or 32 GB
HDD	100 GB or higher	500 GB or higher	500 GB or higher
Network Card	Ethernet card 10/100 Mbps	Ethernet card 100 Mbps or higher	Ethernet card 100 MBps or 1 Gbps
Server's OS	Windows 7/8/8.1/10 Linux - any HP-UX / IBM-AIX Any OS supporting JVM	Windows 7/8/8.1/10 Linux - any HP-UX / IBM-AIX Any OS supporting JVM	Windows 7/8/8.1/10 Linux - any HP-UX / IBM-AIX Any OS supporting JVM
Database	MySQL, PostgreSQL	MySQL, PostgreSQL	MySQL, PostgreSQL
SMTP server	IP address	IP address	IP address
Backup, safety and Security	Customer's responsibility	Customer's responsibility	Customer's responsibility

Network Infrastructure:

Good WiFi (802.11g, 2.4GHz) coverage or Ethernet socket (one for each Gateway/WiFlow)

Device requirements:

Possibility to use web browser



GUARDIAN allows to set up common configurations to be applied to all the units located in a room or floor

ENVIRONMENTAL SUSTAINABILITY: MINIMIZE IMPACT MAXIMIZING VALUE
 What Tecniplast did to become leader in sustainability:

Company:

- Quality Management System Certification according to ISO 9001 and Environmental Management System Certification according to ISO 14001.
- Certified Environmental Report according to Eni Foundation Enrico Mattei Guidelines.

Products:

- Life Cycle Assessment (LCA) according to ISO 14040 and ISO 14044.
- Carbon Footprint according to PAS 2050.
- Environmental Data Sheet according to ISO 14025.
- Contribution to credits under the LEED rating system.



HEADQUARTERS
ITALY | Tel. +39 0332 809711 • www.tecniplast.it • E-mail: tecnicom@tecniplast.it

SISTER COMPANIES

AUSTRALIA/NEW ZEALAND | Tel. + 61 2 8845 6500 • www.tecniplast.it • E-mail: info@tecniplast.com.au

CHINA | Tel. + 86 (0)21 50810920 • www.tecniplast.cn • E-mail: tecniplastchina@tecniplast.it

FRANCE | Tel. +33 (0)4 72 52 94 41 • www.tecniplast.fr • E-mail: info@tecniplast.fr

GERMANY | Tel. +49 (0)8805 921320 • www.tecniplast.de • E-mail: info@tecniplast.de

UNITED KINGDOM | Tel. + 44 (0)845 0504556 • www.tecniplast.it • E-mail: info@tecniplastuk.com

JAPAN | Tel. +81 (0)3 5770 5375 • www.tecniplast.it • E-mail: info@tecniplastjapan.co.jp

USA | Toll Free: +1 877.669.2243 • www.tecniplastusa.com • E-mail: info@tecniplastusa.com

CANADA | Toll Free: +1 855.347.8718 • www.tecniplastcanada.com • E-mail: info@tecniplastcanada.com

To find your local distributor, please visit www.tecniplast.it

Tecniplast reserves the right to change or modify product and or specifications without notice or obligation. Gateway is a Tecniplast trademark.

Related Products

To maximise operational efficiency and learn more about these products contact your local representative.



Wi Flow.
 Air Handling Unit designed for **ONE 2 ONE** control and pre-arranged for **GUARDIAN**.



Smart and Easy Flow.
 The Tecniplast most popular Air Handling Units featuring safe ventilation and multi-linking capability.



Sky Flow.
 The Tecniplast wall-mounted Air Handling Unit featuring safe ventilation and multi-linking capability.



ISOcage P.
 Especially designed for gnotobiotics, germ-free and immunocompromised animals, ISOcage P is an isolator at cage level.