



# CONVENTIONAL CAGES





DISCOVER THE WIDEST  
RANGE OF CONVENTIONAL  
HOUSING SOLUTIONS  
PROMOTING ANIMAL WELFARE  
AND MEETING RESEARCH  
REQUIREMENTS

TECNIPLAST IS THE IDEAL PARTNER AT YOUR SIDE FOR YOUR HOUSING NEEDS.

WE PROVIDE SOLUTIONS FOR ANY CONVENTIONAL HOUSING REQUIREMENT:

- **STAINLESS STEEL RACKS WITH PLASTIC "T-PROFILE" SUSPENSION RUNNERS** DESIGNED FOR HUSBANDRY TO MEET HYGIENE NEEDS, OCCUPATIONAL HEALTH AND SAFETY REQUIREMENTS, WITH GREAT CONSIDERATION FOR ERGONOMIC ASPECTS;
- **LEAK-PROOF BOTTLES WITH SILICON RINGS** FEATURE POLISHED AISI 316 STAINLESS STEEL BOTTLE CAPS WITH CONE SHAPED DESIGN THAT MAXIMIZE WATER AVAILABILITY FOR ANIMALS;
- **AUTOCLAVABLE CARD HOLDERS** MADE IN PLASTIC ARE SUITABLE FOR LABELS OF ANY STANDARD SIZE, REDUCING NOISE THAT ARISE FROM THE USUAL STAINLESS STEEL CARD HOLDERS;
- **FILTER TOPS** WITH A FILTRATION AREA LARGER THAN THE CAGE FLOOR AREA MAXIMIZE AIR CIRCULATION AND GASES EXCHANGE;
- **THE WIDEST SELECTION OF ACCESSORIES, OPTIONS AND HOUSING COMBINATION** SATISFIES ANY RESEARCH AND HUSBANDRY NEED.

EVERYTHING UNDERGOES THE TOP QUALITY CHECK TO DELIVER THE RELIABILITY YOU EXPECT FROM US FOR A LONG-LASTING PRODUCT.

## INDEX



**5** SMALL  
RODENTS

- 6 • GUIDELINES
- 8 • CAGE RANGE
- 10 • LIDS
- 12 • BOTTLES, CAPS & LABEL HOLDERS
- 14 • ACCESSORIES
- 16 • RACKS
- 20 • DRAWER STYLE

**23**  
RABBITS,  
GUINEA PIGS  
& FERRETS

- 24 • R-SUITE
- 28 • GP-SUITE
- 30 • F-SUITE





## GUIDELINES



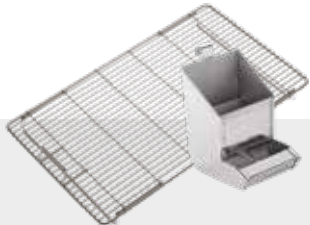
CAGE RANGE



LIDS



BOTTLES, CAPS  
& LABEL HOLDERS



ACCESSORIES



RACKS



DRAWER  
STYLE

# SMALL RODENTS

BECAUSE CAGING EQUIPMENT IS ONE OF THE MOST IMPORTANT ELEMENTS IN THE PHYSICAL AND SOCIAL ENVIRONMENT OF THE ANIMALS USED IN EXPERIMENTAL PROCEDURES, TECNIPLAST HAS DEVELOPED, WITH CUSTOMERS' VALUED HELP, THE LARGEST RANGE OF CAGES

Let us help you  
choosing the right cage  
for your housing needs

TECNIPLAST CAGE RANGE MEETS AND EXCEEDS CURRENT INTERNATIONAL RULES AND GUIDELINES. TAKE A LOOK AT THE TABLES TO FIND THE RIGHT CAGE MEETING YOUR SPECIFIC NEEDS.

## LEGEND

FOR EU, USA AND UK GUIDELINES

- 1144B
- 1145T
- 1264C
- 1284L
- 1290D  
preferred choice for mice
- 1291H  
preferred choice for rats
- 2150E
- 2154F
- 1500U
- 1354G
- 2000P

EU: Requirements for Establishments and for the Care of Accommodation of Animals, Annex III of the Directive 2010/63/EU of the European Parliament and of the Council on the protection of animals used for scientific purposes, 22 September 2010

USA: Guide for the Care and Use of Laboratory Animals, Institute of Laboratory Animal Research - eighth edition, Division on Earth and Life Studies, National Research Council, National Academy Press, Washington D.C. 201

UK: Home Office - Animals (Scientific Procedures) Act 1986 Amendment Regulations 2017

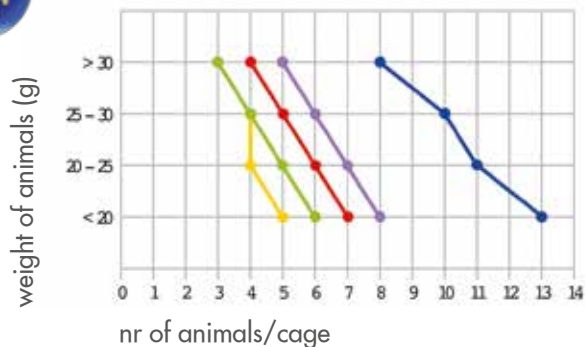
\* Where a shelf is provided for guinea pigs that are use animals or use stock animals, for the purpose of calculating the minimum floor area, up to 100cm<sup>2</sup> of the shelf area per animal may be included where there is adequate height for the animal above and below the shelf.

\*\* Where a shelf is provided for guinea pigs that are use animals or use stock animals, for the purpose of calculating the minimum floor area, up to 50cm<sup>2</sup> of the shelf area per animal may be included where there is adequate height for the animal above and below the shelf.

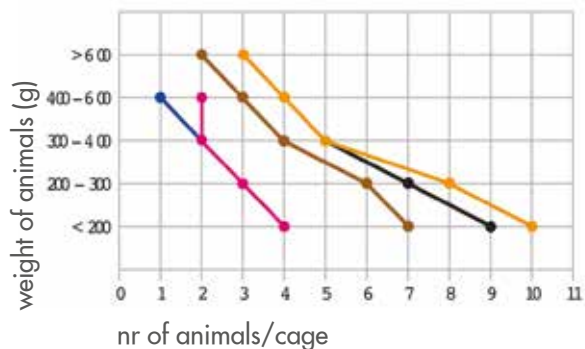


EU GUIDELINES

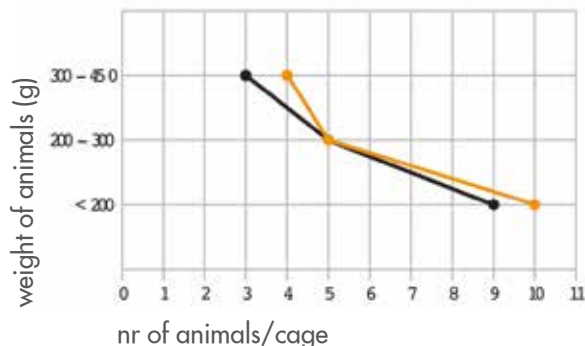
NUMBER OF MICE PER CAGE



NUMBER OF RATS PER CAGE



NUMBER OF GUINEA PIGS PER CAGE

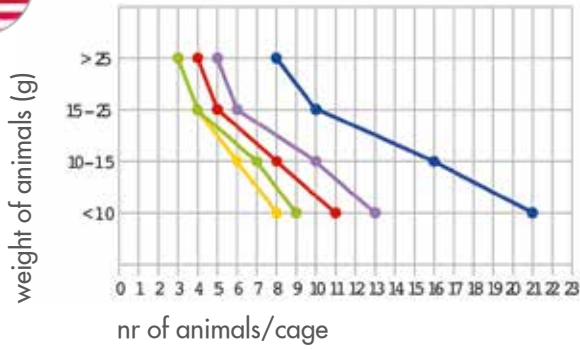


MIN FLOOR AREA AND HEIGHT

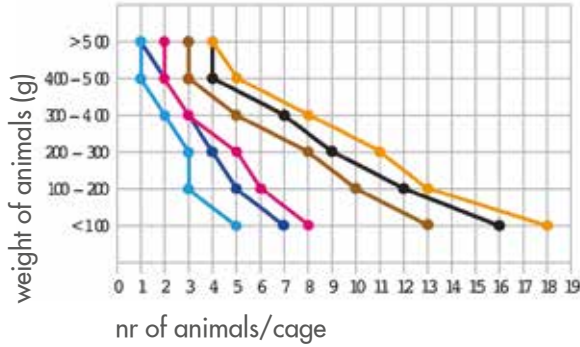
Species	Body Weight (g)	Min Enclosure Size (cm <sup>2</sup> )	Floor Area/Animal (cm <sup>2</sup> )	Min Enclosure Height (cm)
Mice	< 20	330	60	12
	20 - 25	330	70	12
	25 - 30	330	80	12
	> 30	330	100	12
Rats	< 200	800	200	18
	200 - 300	800	250	18
	300 - 400	800	350	18
	400 - 600	800	450	18
	> 600	1500	600	18
Hamsters	< 60	800	150	14
	60 - 100	800	200	14
	> 100	800	250	14
Guinea Pigs	< 200	1800	200	23
	200 - 300	1800	350	23
	300 - 450	1800	500	23
	450 - 700	2500	700	23
	> 700	2500	900	23



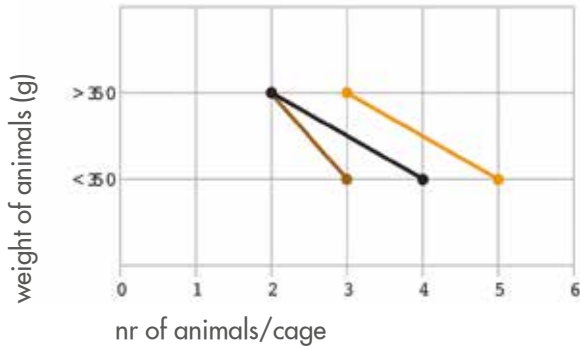
NUMBER OF MICE PER CAGE



NUMBER OF RATS PER CAGE



NUMBER OF GUINEA PIGS PER CAGE

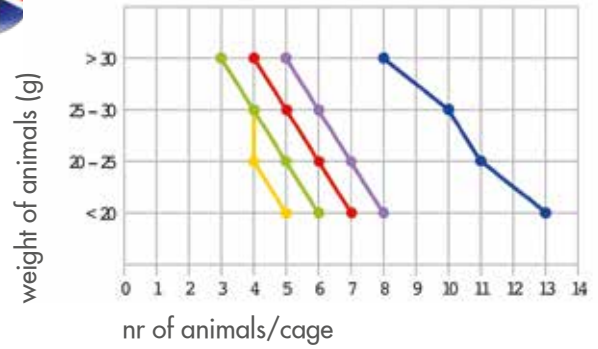


MIN FLOOR AREA AND HEIGHT

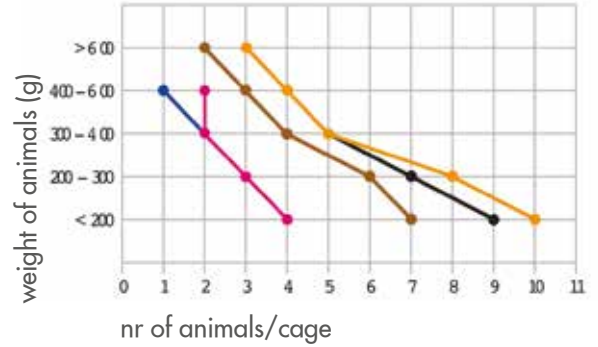
Species	Body Weight (g)	Floor Area/Animal (cm <sup>2</sup> /in <sup>2</sup> )	Min Height (cm/inch)
Mice	< 10	38.7 / 6	12.7 / 5
	10 - 15	51.6 / 8	12.7 / 5
	15 - 25	77.4 / 12	12.7 / 5
	> 25	≥ 96.7 / ≥ 15	12.7 / 5
Rats	< 100	109.6 / 17	17.8 / 7
	100 - 200	148.35 / 23	17.8 / 7
	200 - 300	187.05 / 29	17.8 / 7
	300 - 400	258 / 40	17.8 / 7
	400 - 500	387 / 60	17.8 / 7
	> 500	≥ 451.5 / ≥ 70	17.8 / 7
Hamsters	< 60	64.5 / 10	15.2 / 6
	60 - 80	83.8 / 13	15.2 / 6
	80 - 100	103.2 / 16	15.2 / 6
	> 100	≥ 122.5 / ≥ 19	15.2 / 6
Guinea Pigs	< 350	387 / 60	17.8 / 7
	> 350	≥ 651.5 / ≥ 101	17.8 / 7



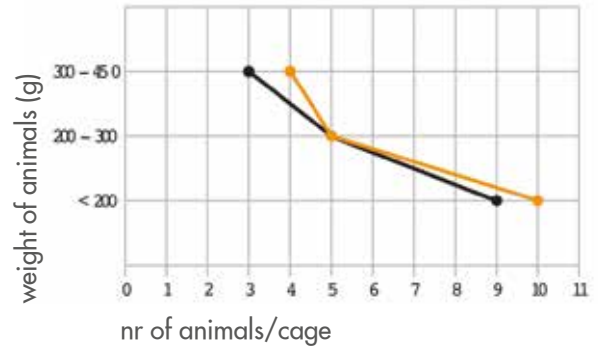
NUMBER OF MICE PER CAGE



NUMBER OF RATS PER CAGE



NUMBER OF GUINEA PIGS PER CAGE



MIN FLOOR AREA AND HEIGHT

Species	Body Weight (g)	Min Enclosure Size (cm <sup>2</sup> )	Floor Area/Animal (cm <sup>2</sup> )	Min Enclosure Height (cm)
Mice	< 20	330	60	12
	20 - 25	330	70	12
	25 - 30	330	80	12
	> 30	330	100	12
	> 30	330	100	12
Rats	< 200	800	200	18
	200 - 250	800	250	18
	250 - 300	800	250	20
	300 - 400	800	350	20
	400 - 600	800	450	20
	> 600	1500	600	20
Hamsters	< 60	800	150	15
	60 - 100	800	200	15
	> 100	800	250	15
Guinea Pigs	< 150	1800	200	23
	150 - 200	1800	300*	23
	200 - 250	1800	350	23
	250 - 300	1800	400**	23
	300 - 450	1800	500	23
	450 - 650	2500	700	23
	650 - 700	2500	750**	23
> 700	2500	900	23	

TECNIPLAST CAGE BODIES ARE DESIGNED TO FACILITATE ANIMAL WELFARE, MEET RESEARCH REQUIREMENTS AND MINIMIZE EXPERIMENTAL VARIABLES. THE FOLLOWING CAGE BODY SELECTION IS GROUPED BY SPECIES. PLEASE NOTE THAT THE DIMENSIONS ARE IN THE FOLLOWING ORDER: L x W x H (LENGTH x WIDTH x HEIGHT).



POLYCARBONATE - PC

Transparent plastic with exceptional impact strength and heat resistance. It can be autoclaved at 121°C/250°F.



M

1144B

331 x 159 x 132 mm  
13.03 x 6.26 x 5.19 in  
floor area: 335 cm<sup>2</sup>/51.92 in<sup>2</sup>



M

1145T

369 x 165 x 132 mm  
14.53 x 6.49 x 5.19 in  
floor area: 435 cm<sup>2</sup>/67.42 in<sup>2</sup>

Choose your animal...  
Find your cage!

M

MICE

R/H

RATS/HAMSTERS

GP

GUINEA PIGS



R/H

1291H  
EUROSTANDARD TYPE III H

425 x 266 x 185 mm  
16.73 x 10.47 x 7.28 in  
floor area: 800 cm<sup>2</sup>/124 in<sup>2</sup>



GP

1500U  
EUROSTANDARD TYPE IV S

R/H

480 x 375 x 210 mm  
18.89 x 14.76 x 8.27 in  
floor area: 1500 cm<sup>2</sup>/232.5 in<sup>2</sup>







## PLASTIC SELECTION

Cage Body	Polycarbonate	H-Temp
1144B	-001	-00SU
1145T	-001	-00SU
1264C	-001	-00SU
1284L	-001	-00SU
1290D	-001	-00SU
1291H	-001	-00SU
2150E	-001	-00SU
2154F	-001	-00SU
1500U	-001	-00SU
1354G	-001	-
2000P	-001	-00SU

### H-TEMP POLYSULFONE - PSU

Highly resistant plastic which can be autoclaved at 134°C/273°F. Considering an average of one autoclaving cycle/week, the threeyear warranty corresponds to 150 cycles at least.

\* Please refer to Tecniplast warranty documents

For automatic watering option, please contact your Tecniplast representative



**M** 1264C EUROSTANDARD TYPE II  
268 x 215 x 141 mm  
10.55 x 8.46 x 5.55 in  
floor area: 370 cm<sup>2</sup>/57.35 in<sup>2</sup>



**M** 1284L EUROSTANDARD TYPE II L  
365 x 207 x 140 mm  
14.37 x 8.15 x 5.51 in  
floor area: 530 cm<sup>2</sup>/82.15 in<sup>2</sup>



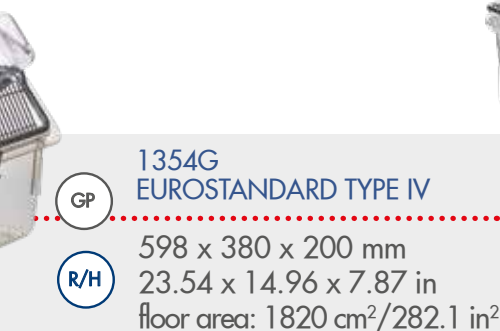
**M**  
**R/H** 1290D EUROSTANDARD TYPE III  
425 x 276 x 153 mm  
16.73 x 10.87 x 6.02 in  
floor area: 820 cm<sup>2</sup>/127.1 in<sup>2</sup>



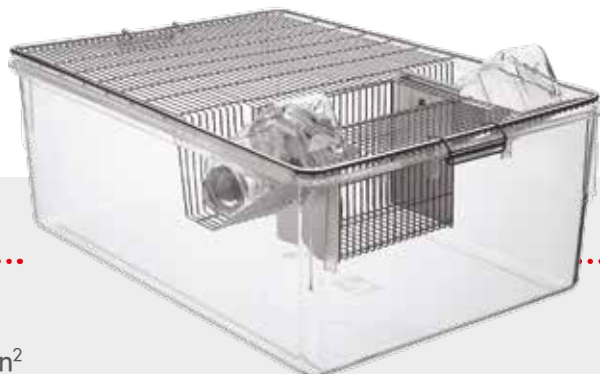
**R/H** 2150E  
355 x 235 x 190 mm  
13.98 x 9.25 x 7.48 in  
floor area: 580 cm<sup>2</sup>/89.9 in<sup>2</sup>



**R/H** 2154F  
482 x 267 x 210 mm  
18.98 x 10.51 x 8.27 in  
floor area: 940 cm<sup>2</sup>/145.7 in<sup>2</sup>



**GP**  
**R/H** 1354G EUROSTANDARD TYPE IV  
598 x 380 x 200 mm  
23.54 x 14.96 x 7.87 in  
floor area: 1820 cm<sup>2</sup>/282.1 in<sup>2</sup>



**GP**  
**R/H** 2000P  
612 x 435 x 216 mm  
24.09 x 17.12 x 8.5 in  
floor area: 2065 cm<sup>2</sup>/320.07 in<sup>2</sup>

INNER FITTING LID

COMPATIBLE WITH FILTER TOPS



SERIES -016/-116/-015/115

Standard lid with built-in u-shaped feed hopper and hinged divider which collapses to allow nesting of lids. Features solid sheet sides, swing-clip lock and bottle protection washer, designed to prevent chewing of non-metal tops. Series -015/-016 is without hinged divider and can be equipped with removable divider.

SERIES -014/-114

Same features like as series -116. The difference is the spring-clip closure. Series -014 is without hinged divider and can be equipped with removable divider.



REMOVABLE DIVIDER

Most of the wire lids or raised wire lids, without hinged divider, can be equipped with removable dividers which separate the lid built-in food hopper and the bottle holder.

OUTER FITTING LID

NOT COMPATIBLE WITH FILTER TOPS

SERIES -012

With built-in u-shaped feed hopper, solid sheet sides, swing-clip lock and push-pull action for quick access to cage occupants. The series can be equipped with removable divider.



SERIES -025

Flat lid without feed hopper. Designed for use with post-surgery animals or infusion work.

WIRE LID SELECTION AND REMOVALE DIVIDER

Cage body	Inner fitting lid with hinged divider	Inner fitting lid without hinged divider	Outer fitting lid without hinged divider	Removable divider	Flat lid	Species
1144B	- 116	- 016	-	1264C812	-	Mice
1145T	- 116	- 016	-	-	-	Mice
1264C	- 116	- 016	- 012	1264C812	- 025	Mice
1284L	- 116	- 016	-	1264C812	-	Mice
1290D 1291H*	- 116 <sup>□</sup>	- 016 <sup>□</sup>	- 012 <sup>□</sup>	1290D812 <sup>□</sup>	- 025 <sup>□</sup>	Mice Rats*** Hamsters
2150E	- 114	- 014	-	1290D812	-	Rats Hamsters
2154F	- 114	- 014	-	1290D812	- 025	Rats Hamsters
1500U**	- 116 <sup>□□</sup>	- 016 <sup>□□</sup>	-	1400U812	-	Rats Hamsters
1354G	- 115	- - 015	- 012* -	1354G812 1290D812	-	Mice Rats Hamsters Guinea Pigs
2000P	- 214 <sup>■■</sup> - 242 <sup>□□□</sup>	- 014	-	-	-	Rats Hamsters Guinea Pigs

□ 1291H to be ordered as 1290D -116/-016/-012/-812/-025  
 □□ 1500U to be ordered as 1400U -116/-016  
 □□□ 2000P -242 to be ordered with Drop-In Hopper -962 or -950  
 \* Can be used with mice  
 \*\* Two dividers  
 \*\*\* 1290D to be ordered with Raised Wire Lid for Housing Rats

For us  
Quality is a must!

WE USE ONLY FIRST CHOICE CERTIFIED AISI 304 STAINLESS STEEL TO GUARANTEE UNIFORM QUALITY WITH MINIMAL DIRT TRAPS AND EXCELLENT STACKABILITY FOR EASE OF HANDLING AND STORAGE. OUR LIDS ARE DESIGNED TO ENSURE PERFECT FIT AND POSITIVE LOCKING THROUGHOUT THE COMPLETE PRODUCT RANGE

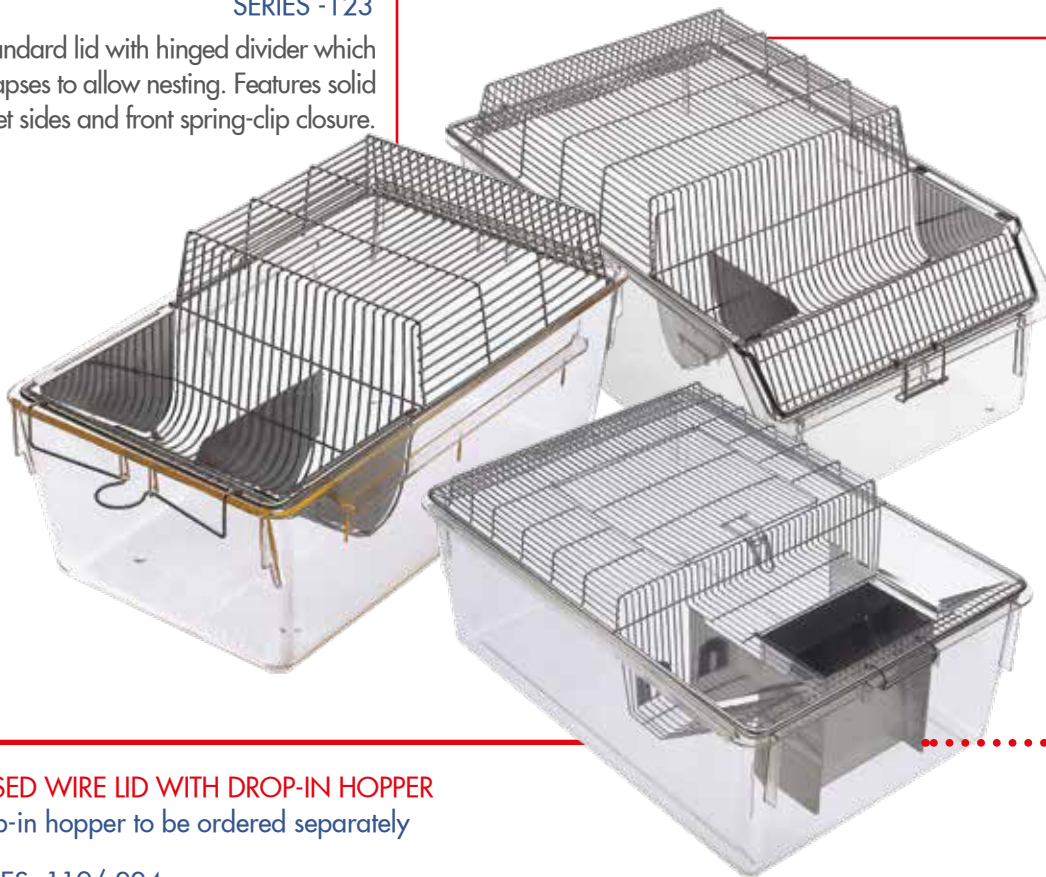
## RAISED WIRE LID

DESIGNED FOR HOUSING RATS AND GUINEA PIGS  
NOT COMPATIBLE WITH FILTER TOPS (EXCEPT FOR 2000P-224)

### RAISED WIRE LID WITH BUILT-IN U-SHAPED FEED HOPPER

#### SERIES -123

Standard lid with hinged divider which collapses to allow nesting. Features solid sheet sides and front spring-clip closure.



#### SERIES -117/-120

Lid with hinged divider which collapses to allow nesting of lids. Features solid sheet sides and swing-clip lock. External fitting, with push-pull action for easy access to cage occupants.



### RAISED WIRE LID WITH DROP-IN HOPPER

Drop-in hopper to be ordered separately

#### SERIES -119/-224

Features swing-clip lock, dual bottle depressions, allows push-pull action, plus top opening hatch for quick access to cage occupants

Cage body	Lid with divider	Lid without divider	Removable divider	Raised height (mm/in)	Top hatch access (mm/in)	Drop-in hopper for guinea pigs	Drop-in hopper for rats	Species
1290D 1291H*	-123°	-023°	-812°	60 / 2.36	-	-	-	Rats
1500U**	-224°□□	-	-	40 / 1.57	165 x 220 / 6.49 x 8.66	-965°□□□	-952°□□□	Rats Guinea Pigs
1354G	-117 -120 -119°	-017 -020 -	-812 -812 -	25 / 0.98 70 / 2.75 70 / 2.75	- - 220x225 / 8.66 x 8.86	- - -965	- - -952	Rats Guinea Pigs
2000P	-224°	-	-	40 / 1.57	220 x 225 / 8.66 x 8.86	-962	-950	Rats Guinea Pigs

□ 1291H to be ordered as 1290D -123/-023/-812

□□ 1500U to be ordered as 1400U -224

□□□ To be ordered as 1354G -965/-952

▪ Two dividers

## BOTTLE SELECTION

Tecniplast bottles have a long lasting silicone ring enabling easy placing and removal of caps; the ring doesn't have to be removed for cleaning when bottles are autoclaved and features three protruding lips which prevent water from leaking.

Bottles are made of clear-glass Polycarbonate (PC), compliant with Title 21 FDA requirements and Autoclavable at 121°C /250°F for 20 minutes. The most popular sizes/styles are optionally available in H-Temp (PSU) and X-Temp (PPSU).

Our bottles feature:

- Consistent thickness
- Rigid walls, cannot be squeezed when handling
- Wide mouth (Ø 44.5 mm) to aid filling and emptying, whilst also ensuring effective washing
- Embossed, moulded graduations as aid to volume measurement



Graduated up to: 150 ml  
Total volume: 190 ml  
Ø 54 x 112 mm  
2.12 x 4.41 in  
Available:  
■ (PC) ACBT0152

**A**



Graduated up to: 250 ml  
Total volume: 280 ml  
Ø 56 x 154 mm  
2.2 x 6.06 in  
Available:  
■ (PC) ACBT0252

**B**



Graduated up to: 260 ml  
Total volume: 300 ml  
55 x 55 x 129 mm  
2.16 x 2.16 x 5.08 in  
Available:  
■ (PC) ACBT0262  
■ (PSU) ACBT0262SU

**C**



Graduated up to: 400 ml  
Total volume: 450 ml  
72 x 72 x 122 mm  
2.83 x 2.83 x 4.8 in  
Available:  
■ (PC) ACBT0402  
■ (PSU) ACBT0402SU

**D**



Graduated up to: 500 ml  
Total volume: 600 ml  
Ø 74 x 174 mm  
2.91 x 6.85 in  
Available:  
■ (PC) ACBT0502

**E**



Graduated up to: 600 ml  
Total volume: 720 ml  
72 x 72 x 180 mm  
2.83 x 2.83 x 7.09 in  
Available:  
■ (PC) ACBT0702  
■ (PSU) ACBT0702SU

**F**



Graduated up to: 750 ml  
Total volume: 900 ml  
Ø 84 x 210 mm  
3.31 x 8.27 in  
Available:  
■ (PC) ACBT0752

**G**



Graduated up to: 1000 ml  
Total volume: 1100 ml  
83 x 83 x 226 mm  
3.27 x 3.27 x 8.89 in  
Available:  
■ (PC) ACBT1000  
WITHOUT SILICONE RING

**H**

Cage Body	Bottle
1144B	A
1145T	C
1264C	B/D
1284L	C/D
1290D	E
1291H	E/F
2150E	C/D
2154F	F
1500U	F
1354G	F/G/H
2000P <sup>□</sup>	F/G/H

<sup>□</sup> Please contact us for compatibility with racks

TAKE A LOOK AT IWT WASHING  
BROCHURE TO FIND OUT OUR  
SOLUTIONS FOR BOTTLE WASHING





## CAP SELECTION

Tecniplast metal bottle caps are totally made of polished AISI 316 Stainless Steel, to be corrosion resistant. The caps are chew-proof and have a one-piece sipper tube design. A perfect long-lasting product is guaranteed by our special production processes, constant quality standards and attention to detail. The cone shaped cap design, with the slope of the bottle, maximize water availability for animals.

SS cap for bottles	Nylon cap for bottles	Hole (mm/in)	External diameter (mm/in)	Length (mm/in)
ACCP2521	ACCP2522	Ø 1.8 / 0.07	6.5 / 0.25	25 / 0.98
ACCP2511	-	Ø 1.0 / 0.04	6.5 / 0.25	25 / 0.98
ACCP50	-	with balls	8 / 0.31	50 / 1.97
ACCP6521	-	Ø 2.2 / 0.09	8 / 0.31	65 / 2.56



**ACCP2521**  
Standard bottle cap  
in S/S



**ACCP2511**  
Cap Remover



**ACCP2521**  
For special applications,  
where the control of water  
consumption is essential



**ACCP50**  
For special experiments,  
where easy accessibility  
and high water flow  
rate of water is needed



**ACCP6521**  
Specially designed  
for small, weak  
or post-surgery  
animals



**ACCP2522**  
Same design as  
series ACCP2521,  
but made of plastic  
(shorter lifespan)

## LABEL HOLDER SELECTION

Vertical or horizontal, Tecniplast label holders are available with two different attachments:

WITH SPRING\*



Allows label holder to swivel and enables writing without removing the card. Please note, that the spring design is only suitable for Tecniplast cages, with pre-drilled lugs for label holder attachments

WITH HOOK



Suitable for  
any cage or lid

\* not compatible with lids with spring clip closure

Label holder	L x H (mm/in)	Style	Suits cards L x (H) (mm/in)
ACPC0050	75 x 105 2.95 x 4.13	S/S, vertical, hook	70 x (50÷100) 2.75 x (1.97÷3.94)
ACPC0055	105 x 75 4.13 x 2.95	S/S, horizontal, spring	100 x (50÷90) 3.94 x (1.97÷3.54)
ACPC0060	75 x 105 2.95 x 4.13	S/S, vertical, spring	70 x (50÷100) 2.75 x (1.97÷3.94)
ACPC0056	130 x 77 5.12 x 3.03	S/S, horizontal, spring	125 x (50÷90) 4.92 x (1.97÷3.54)
ACPC0046 <sup>o</sup>	80 x 60 3.15 x 2.36	S/S, horizontal, spring	75 x (50÷80) 2.95 x (1.97÷3.15)
ACPC0045PL	105 x 75 4.13 x 2.95	plastic, horizontal, hook	100 x (50÷90) 3.94 x (1.97÷3.54)
ACPC0055PL	105 x 75 4.13 x 2.95	plastic, horizontal, spring	100 x (50÷90) 3.94 x (1.97÷3.54)
ACPC0056PL	130 x 77 5.12 x 3.03	plastic, horizontal, spring	125 x (50÷90) 4.92 x (1.97÷3.54)
ACPC0065PL	130 x 77 5.12 x 3.03	plastic, horizontal, hook	125 x (50÷90) 4.92 x (1.97÷3.54)

<sup>o</sup> Wide format specific for cage 2000P

## FILTER TOP

Tecniplast Filter Tops consist of three parts:

- Polysulfone (PSU) H-Temp Frame
- Polyester Filter Sheet with an atmospheric dust efficiency of 92% on 8-10µm particles
- Stainless Steel Retainer.

The patented Filter Top Cage System creates a protective barrier at cage level with major advantages for the protection of both animals and staff. Filter Top Cages can be autoclaved as complete units. The Filter Top can optionally be supplied with Nylon Lock Latches to prevent accidental dislodgement from the cage body. Due to their large filtration area, the filter tops maintain an efficient gaseous interchange with the external environment, resulting in lower levels of intra-cage NH<sub>3</sub> and CO<sub>2</sub>, compared with competitor systems.

*Protection is our profession!*

### Animal Protection

- Proven microbial protection; protection against pathogenic containments
- Better microenvironment inside the cage, due to reduced fluctuations in temperature and humidity, plus the elimination of draughts
- Enhanced animal health, reduced infant mortality and respiratory problems

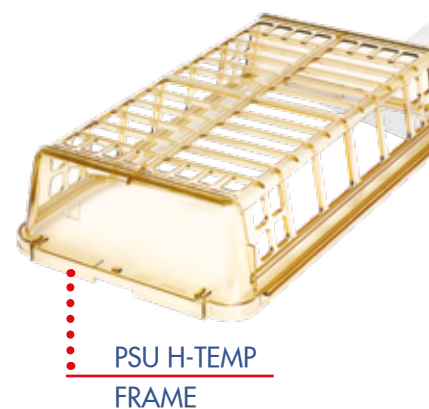
### Staff Protection

- Reduced air-borne contaminations in the working environment
- Significant lowering of respiratory associated allergenic reactions among animal care staff.

### POLYESTER FILTER SHEET

available as spare part

### S/S RETAINER



## POWDER FEEDER

Made of AISI 304 S/S, Tecniplast powder feeders are located inside the cages and hang at the cage body wall. Provided with one or more partitions, they can be accessed simultaneously by two or more animals. These feeders are designed with small compartments to prevent animals from entering and nesting and to reduce waste and spillage.



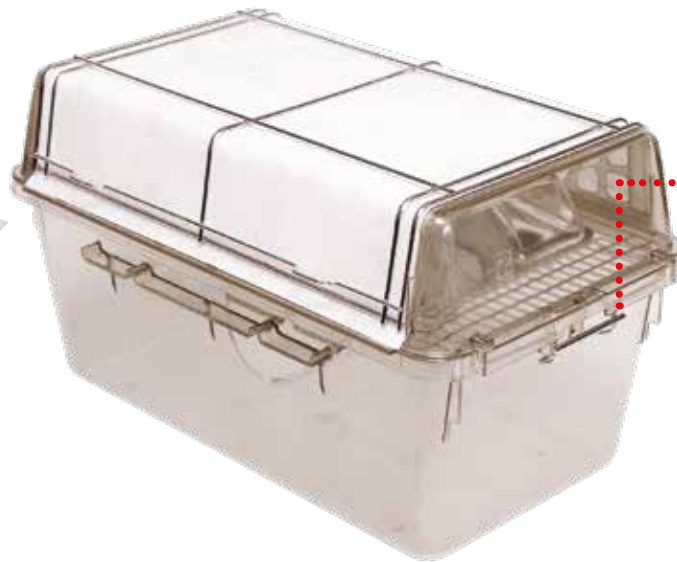
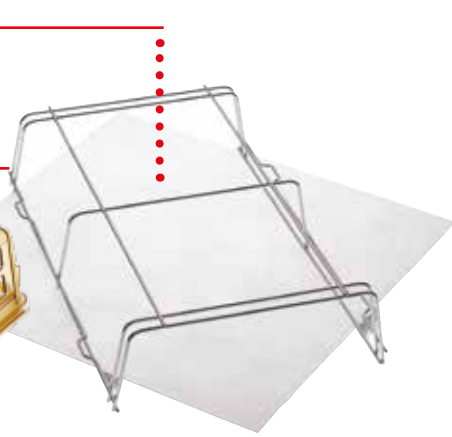
### SERIES -927/-922/-923

Unique two-part design consisting of lower tray/hopper to be filled with powder feed, whilst the upper lid/divider section slides down directly onto the food. A series of S/S cross-wires on the bottom of the top section provides many small slots through which the animals feed, encouraging the consumption of fine particles (ensuring ingestion of test medium). Ideal for powder feed studies.

### SERIES -929

Simple "J"-Design for use with lid Series -012, it features anti-spill lip at front and separation wires.

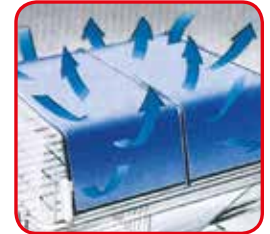
Cage body	Powder feeder	Number of compartments	Species
1264C	- 929	2	Mice
1290D	- 929	3	Rats
	- 927	7	Mice
1291H	- 922	2	Rats
	- 923	3	Rats
2150E	- 922	2	Rats
2154F	- 922	2	Rats
	- 923	3	Rats
1354G	- 929	4	Rats



### NYLON LOCK LATCH



optional:

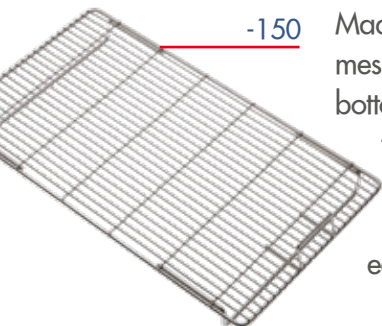


### EFFICIENT GASEOUS INTERCHANGE

Cage body	Autoclavable filter top	Autoclavable filter top with nylon lock latches	Replacement filter sheet
1144B	- 400SU	- 400SUC	- 420R
1145T	- 400SU	- 400SUC	- 420R
1264C	- 400SU	- 400SUC	- 420R
1284L	- 400SU	- 400SUC	- 420R
1290D/1291H <sup>□</sup>	- 400SU <sup>□</sup>	- 400SUC <sup>□</sup>	- 420R <sup>□</sup>
2150E	- 400SU	-	- 420R
2154F	- 400SU	-	- 420R
2000P	- 400SU	-	- 420R

<sup>□</sup> 1291H to be ordered as 1290D -400SU/-400SUC/-420R

### RAISED BOTTOM GRID

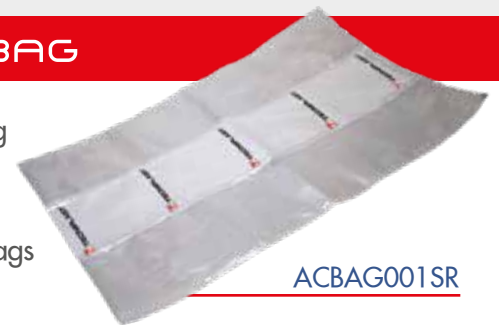


**-150** Made of AISI 304 S/S wire mesh, it can be dropped into solid bottom cages to separate animals from their waste. It features 30mm elevation for mice and for rats/guinea pigs; easy to insert and remove.

Cage Body	Raised bottom grid
1144B	- 150
1145T	- 150
1264C	- 150
1284L	- 150
1290D	- 150
1291H	- 150
2150E	- 150
2154F	- 150
1500U	- 150
1354G	- 150

### PLASTIC BAG

Ideal for autoclaving cages when protective covering is needed, plastic bags feature breathable sides to prevent cage deformation.



ACBAG001SR

### MOUSE HOUSE



It provides a complex three-dimensional environment within standard laboratory caging. The Mouse House incorporates entrances, a shelf and a large nesting area. Its design maximises the use of floor area and encourages mice to zone their cage space.

## SMALL RODENTS • RACKS

TECNIPLAST RACKS ARE ALL MADE OF AISI 304 S/S. IT IS POSSIBLE TO CHOOSE AMONG DIFFERENT TYPES OF RACK:

- RUNNER STYLE
- ADJUSTABLE SHELF STYLE
- DEMOUNTABLE SHELF STYLE
- WELDED SHELF STYLE



NYLON RUNNERS



POLYURETHANE COATED CASTORS



BUMPER



### RUNNER STYLE RACK

Tecniplast AISI 304 Stainless Steel racks are unparalleled with respect to husbandry and hygiene considerations, occupational health and safety requirements, ergonomics, reduced noise levels and aesthetic appeal.

The design permits an excellent view into all cages and their occupants. Having pioneered tubular S/S construction of racks, Tecniplast today utilizes a 3D-CAD-system design, automated cutting, punching and TIG welding construction processes.

Attention to detail, such as uniform polishing and finishing conclude the work. This is your guarantee for a long-lasting product that offers an exceptional Return on Investment.

Tecniplast unique "T-profile" suspension runners are specifically designed to minimize dirt traps, whilst permitting safe, simple and silent positioning of cages without risk of damage. They are far superior to metal runners or channels of other racks.

Other features are:

- S/S solid top sheet to reduce the exposure to draught and excessive light of the top rows
- Tubular base corners are all rounded for improved safety and to avoid damage of wall covering; four retrofitting plastic bumpers can also be provided on request.

### MESH BOTTOM CAGE

Mesh bottom cages are recommended whenever rodents need to be temporary housed on mesh flooring: excrements are collected in a separate PC waste tray. Rats and guinea pigs are housed on 11x11 mm mesh, whilst mice require a 7x7 mm grid spacing. Mesh bottom cages can be either used with Double Runner Style Racks or Individual S/S Support Frame.



Cage body	Rack configuration				Rack model		Dimensions without bumpers L x W x H (mm/in)
	Nr of cages	Design	Rows	Columns	Without bumpers	with bumpers	
1144B	64	Single-sided	8	8	2B64B1000	2B64B1000BW	1494 x 480 x 1874 / 58.82 x 18.90 x 73.78
1145T	42	Single-sided	7	6	2T42B1000	2T42B1000BW	1128 x 500 x 1648 / 44.41 x 19.68 x 64.88
	48	Single-sided	8	6	2T48B1000	2T48B1000BW	1128 x 500 x 1861 / 44.41 x 19.68 x 73.27
	64	Single-sided	8	8	2T64B1000	2T64B1000BW	1494 x 500 x 1861 / 58.82 x 19.68 x 73.27
	128	Double-sided	8	8	2T128B1000	2T128B1000BW	1494 x 865 x 1861 / 58.82 x 34.06 x 73.27
1264C 1284L	30	Single-sided	6	5	2CL30B1000	2CL30B1000BW	1240 x 480 x 1871 / 48.82 x 18.90 x 73.66
	36	Single-sided	6	6	2CL36B1000	2CL36B1000BW	1482 x 480 x 1871 / 58.35 x 18.90 x 73.66
	48	Single-sided	8	6	2CL48B1000	2CL48B1000BW	1482 x 480 x 1996 / 58.35 x 18.90 x 78.58
	60	Double-sided	6	5	2CL60B1000	2CL60B1000BW	1240 x 880 x 1871 / 48.82 x 34.65 x 73.66
	70	Double-sided	7	5	2CL70B1000	2CL70B1000BW	1240 x 880 x 1871 / 48.82 x 34.65 x 73.66
1290D	24	Single-sided	6	4	2D24B1000	2D24B1000BW	1214 x 515 x 1877 / 47.80 x 20.28 x 73.90
1290D 1291H	20	Single-sided	5	4	2H20B1000 <sup>□</sup>	2H20B1000BW <sup>□</sup>	1214 x 515 x 1655 / 47.80 x 20.28 x 65.16
	20	Single-sided	5	4	2H20B1000H <sup>□</sup>	2H20B1000HBW <sup>□</sup>	1214 x 515 x 1877 / 47.80 x 20.28 x 73.90
	24	Single-sided	6	4	2H24B1000 <sup>□□</sup>	2H24B1000BW <sup>□□</sup>	1214 x 515 x 1947 / 47.80 x 20.28 x 76.65
	30	Single-sided	6	5	2H30B1000	2H30B1000BW	1510 x 480 x 1947 / 59.45 x 18.90 x 76.65
2150E	25	Single-sided	5	5	2E25B1000	2E25B1000BW	1300 x 535 x 1874 / 51.18 x 21.06 x 73.78
	30	Single-sided	6	5	2E30B1000	2E30B1000BW	1300 x 535 x 1874 / 51.18 x 21.06 x 73.78
2154F	20	Single-sided	5	4	2F20B1000	2F20B1000BW	1178 x 580 x 1877 / 46.38 x 22.83 x 73.90
	25	Single-sided	5	5	2F25B1000	2F25B1000BW	1465 x 580 x 1877 / 57.68 x 22.83 x 73.90
1500U	15	Single-sided	5	3	2U15B1000	2U15B1000BW	1239 x 600 x 1791 / 48.78 x 23.62 x 70.51
	20	Single-sided	5	4	2U20B1000	2U20B1000BW	1642 x 600 x 1791 / 64.65 x 23.62 x 70.51
1354G	18	Single-sided	6	3	2G18B1000 <sup>▪</sup>	-	1239 x 690 x 1877 / 48.78 x 27.17 x 73.90
	20	Single-sided	5	4	2G20B1000	2G20B1000BW	1642 x 690 x 1760 / 64.65 x 27.17 x 69.29
	20	Single-sided	5	4	2G20B1000H <sup>□</sup>	2G20B1000HBW <sup>□</sup>	1642 x 690 x 1877 / 64.65 x 27.17 x 73.90
	24	Single-sided	6	4	2G24B1000 <sup>▪</sup>	2G24B1000BW <sup>▪</sup>	1642 x 690 x 1877 / 64.65 x 27.17 x 73.90
2000P	15	Single-sided	5	3	2P15B1000	2P15B1000BW	1395 x 725 x 1877 / 54.92 x 28.54 x 73.90
	18		6	3	2P18B1000LW <sup>**</sup>	2P18B1000LWBW <sup>**</sup>	1395 x 725 x 1980 / 54.92 x 28.54 x 77.95

□ can be used with raised lid

□□ close distance between cages when filter tops are used

▪ to be used with bottle type F

\*\* cannot be used with filter tops

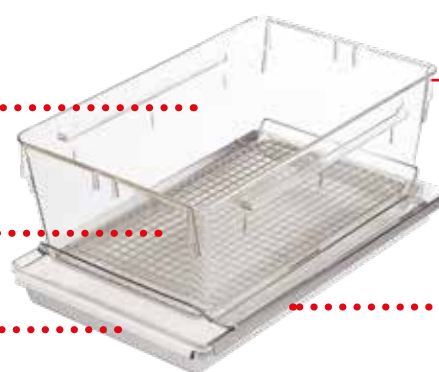


DOUBLE RUNNER RACK

CAGE BODY

S/S FLOOR GRID

TRAY (PC)



STAND-ALONE SOLUTION

INDIVIDUAL S/S SUPPORTY FRAME

Cage body	Rack configuration			Rack model with double runners		Dimensions without bumpers L x W x H (mm/in)	PC body with cut-away base	S/S mesh floor grid 7x7/11x11 mm	Tray (PC)	Individual S/S support frame
	Nr of cages	Design	Rows/columns	Without bumpers	with bumpers					
1264C/1284L	30	single-sided	6/5	2CL30B2000	2CL30B2000BW	1238 x 480 x 1871 / 48.76 x 18.90 x 73.66	- 051	- 524 / -	- 382	- 905
1290D	24	single-sided	6/4	2D24B2000	2D24B2000BW	1214 x 515 x 1877 / 47.80 x 20.28 x 73.90	- 051	- 524 / - 525	- 382	- 905
1291H	20	single-sided	5/4	2H20B2000	2H20B2000BW	1214 x 515 x 1877 / 47.80 x 20.28 x 73.90	- 051	- 524 / - 525	- 382 <sup>□</sup>	- 905 <sup>□</sup>
1354G	20	single-sided	5/4	2G20B2000	2G20B2000BW	1642 x 690 x 1877 / 64.65 x 27.17 x 73.90	- 051	- 524 / - 525	- 382	- 905

□ 1291H to be ordered as 1290D - 382 / - 905

Whatever your needs are,  
we have the  
right answer for you!

TECNIPLAST STANDARD CASTORS ARE COATED WITH POLYURETHANE AND WITHSTAND AUTOCLAVE CYCLES AT 121°C/250°F WHEN RACKS ARE NOT LOADED WITH CAGES. ALTERNATIVELY, IN CASE OF FREQUENT AUTOCLAVING, HIGHER HOLDING TEMPERATURES, OR WHEN RACKS ARE AUTOCLAVED FULLY LOADED, SELECT CASTORS WITH GLASS-FIBRE-REINFORCED NYLON WHEELS.

ADJUSTABLE SHELF STYLE RACK



Equipped with brackets at each corner for a quick change of shelf height by screws, the design of this rack allows the selection of the desired number of shelves. Their later addition or removal, moreover, offers a high density capacity as well as great flexibility to accommodate changed cage sizes during the years. They can be used as single or double-sided racks (with cage series 1264C).

Rack Configuration:

- Shelves (available in different lengths).
- Set of four uprights (available in two sizes).
- Set of four castors (two unbraked and two braked).

Adjustable shelf style rack configuration		
Cat. No.	Description	Dimensions L x W (mm/in)
2UNR0060	shelf	1524 x 585 / 60.00 x 23.03
2UNR0065	shelf	1651 x 585 / 65.00 x 23.03
2UNR0070	shelf	1780 x 585 / 70.08 x 23.03
2UNRPT1676	set of 4 uprights	H 1676° / 65.98°
2UNRPT1834	set of 4 uprights	H 1834° / 72.20°
ACROTLIB125CX <sup>□□</sup>	Polyurethane coated unbraked castor	Ø 125 / 4.92
ACROTFRE125CX <sup>□□</sup>	Polyurethane coated braked castor	Ø 125 / 4.92

Cage body	Number of cages per shelf		
	Shelf length (mm/in)		
	1524/60.00	1651/65.00	1780/70.08
1144B - 1145T	8	9	10
1264C	12	14	14
1284L	6	7	8
1290D - 1291H	5	5	6
2150E	5	6	7
2154F	5	5	6
1500U	3	4	4

□ does not include the castor height (= 155 mm)

□□ to be ordered twice

DEMOUNTABLE SHELF STYLE RACK



Completely demountable with shelves, easily removable without tools.

Solid sheet shelves have side- and back-lips for added security of cage position.

Normally used as single-sided racks only.

Available in two different sizes.

Cage body	Nr of cages per shelf	Dimensions L x W x H (mm/in)	Nr of shelves	Cat. No.
1144B	7	1210 x 345 <sup>□</sup> x 1843 47.64 x 13.58 <sup>□</sup> x 72.56	6	2UN1D500
1145T	6			
1264C 1284L 2150E	5			
1290D 1291H	6	1773 x 572 x 1868 69.80 x 22.50 x 73.54	5	2UN2D500
1500U 1354G	4			

□ overall width including wheels = 480 mm / 18.90 in

WELDED SHELF STYLE RACK



Fully welded for maximum strength and rigidity.

Simple design for easier cleaning and significant comparative low cost.

Only one size available.

Cage body	Nr of cages per shelf	Dimensions L x W x H (mm/in)	Nr of shelves	Cat. No.
1144B	7	1307 x 547 x 1712 51.46 x 21.54 x 67.40	5 (6 <sup>□</sup> )	2UN5B106
1145T	6			
1264C 1284L	5	1307 x 547 x 1712 51.46 x 21.54 x 67.40	5 (6 <sup>□</sup> )	2UN5B106
1290D	4			

□ the roof can be used as extra shelf

## SMALL RODENTS • DRAWER STYLE CAGING

- DESIGNED FOR TOXICOLOGY AND PHARMACOLOGY STUDIES, OPTIMAL FOR APPLICATIONS WHERE FREQUENT ANIMAL HANDLING IS REQUIRED
- DRAWER-STYLE CAGE BODY EXTRACTION FOR A QUICK AND EASY ACCESS TO THE CAGE OCCUPANTS
- MAXIMIZED ERGONOMICS FOR EASY DAILY OPERATIONS AND WORKFLOWS. NO NEED TO REMOVE THE CAGE FROM THE RACK FOR MOST OF THE OPERATIONS:
  - REDUCTION OF THE RISK OF STAFF INJURIES AND MUSCULO-SKELETAL DISEASES
  - QUICKER AND SAFER PROCEDURES
- OPTIMAL VISIBILITY FOR A QUICKER DAILY CHECK



- Two cage sizes available to adapt to any housing requirement:
  - 1500U: 1500 cm<sup>2</sup> floor area
  - 2000P: 2065 cm<sup>2</sup> floor area
- External feeder and water bottle for quicker and easier refilling: ergonomic and time-saver
- AISI 316 S/S wire bar lids integrated to the rack frame that can be detached with no need for any tool: compatible with common washing equipment
- Plastic card holder with flip-up-stay-up feature and plastic runners to reduce noise- and vibration-induced animal stress



RACK 2P15



EASY ACCESS TO ANIMALS



EASY FEEDER REFILLING

CAGE

Cage type	Floor area (cm <sup>2</sup> /sq in)	Overall dimensions L x W x H (mm/in)	Feeder capacity l/fl oz (US)/fl oz (UK)	Water bottle ml/fl oz (US)/fl oz (UK)
1500U	1500 232.50	480 x 375 x 210 18.90 x 14.77 x 8.27	1.8 / 60.87 / 63.36	2 x (700 / 23.67 / 24.64)
2000P	2065 320.07	612 x 435 x 216 24.09 x 17.13 x 8.50	2.4 / 81.15 / 84.47	2 x (700 / 23.67 / 24.64)

RACK

Cage type	Configuration	Overall dimensions L x W x H (mm/in)
1500U	15 cages (3W x 5H) single sided	1239 x 620 x 1688.5 / 48.78 x 24.41 x 66.48
1500U	20 cages (4W x 5H) single sided	1642 x 620 x 1688.5 / 64.45 x 24.41 x 66.48
2000P	15 cages (3W x 5H) single sided	1395 x 725.5 x 1645 / 54.92 x 28.56 x 64.76
2000P	20 cages (4W x 5H) single sided	1850 x 725.5 x 1645 / 72.83 x 28.56 x 64.76



RACK 2U20



EASY BOTTLE REPLACEMENT



# RABBITS, GUINEA PIGS & FERRETS



R-SUITE



GP-SUITE



F-SUITE

THE "SUITE" PRODUCT LINE IS SPECIFICALLY DESIGNED FOR LAGOMORPHS, BIG RODENTS AND MUSTELIDS.

IT FEATURES A THREE-DIMENSIONAL ENRICHED ENVIRONMENT WITH LARGE AND COMFORTABLE SPACES WHERE CAGE INHABITANTS CAN SOCIALIZE, PLAY AND REST.

EVERYTHING WITH A FUNCTIONAL DESIGN IN MIND TO ACHIEVE THE BEST LEVEL OF ANIMAL WELFARE, ERGONOMICS FOR THE OPERATORS, VISIBILITY FOR AN EASY HEALTH CHECK AND THE LOWEST RUNNING COSTS.

TECNIPLAST OFFERS A WIDE RANGE OF DIFFERENT CAGE SIZES, COMPLYING WITH THE MAIN INTERNATIONAL GUIDELINES:

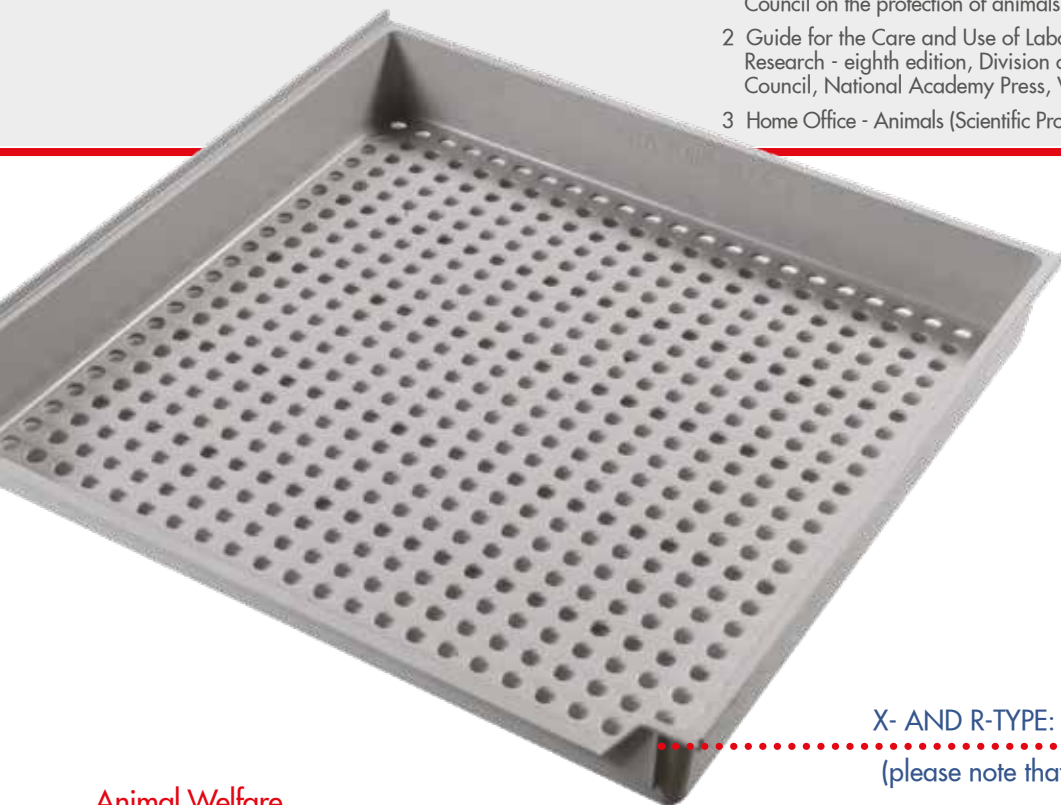
- X-TYPE CAGE - FLOOR AREA 4264 CM<sup>2</sup>
- R-TYPE CAGE - FLOOR AREA 4670 CM<sup>2</sup>
- P-TYPE CAGE - FLOOR AREA 5456 CM<sup>2</sup>

	Final body weight (kg)	Minimum floor area (cm <sup>2</sup> /ft <sup>2</sup> )	Minimum height (cm/in)
EUROPE <sup>1</sup>	< 3	3500	45
	3 - 5	4200	45
	> 5	5400	60
USA <sup>2</sup>	< 2	1400 / 1.5	40.5 / 16
	2 - 4	2800 / 3.0	40.5 / 16
	4 - 5.4	3700 / 4.0	40.5 / 16
	> 5.4	≥ 4600 / ≥ 5.0	40.5 / 16
UK <sup>3</sup>	< 2	2000	40
	2 - 4	4000	45
	4 - 6	5400	45
	> 6	6000	45

1 Requirements for Establishments and for the Care of Accomodation of Animals, Annex III of the Directive 2010/63/EU of the European Parliament and of the Council on the protection of animals used for scientific purposes, 22 September 2010

2 Guide for the Care and Use of Laboratory Animals, Institute of Laboratory Animal Research - eighth edition, Division on Earth and Life Studies, National Research Council, National Academy Press, Washington D.C. 2011

3 Home Office - Animals (Scientific Procedures) Act 1986 Amendment Regulations 2012



X- AND R-TYPE: INJECTION MOULDED NORYL CAGE  
(please note that P-type features thermoformed cages)

### Animal Welfare

- The injection moulded perforated Noryl floor assures:
  - No sharp edges to enhance animal comfort
  - Fast draining and drying design to maintain a clean environment
  - A warm and comfortable environment for rabbits
- The raised shelf and nesting box, together with the internal height, creates an ideal three-dimensional enriched environment
- The rack interlinking system (standard for all racks) increases floor space and allows communication between cages for social housing
- The stainless-steel rack with noise-free Polycarbonate side panels helps to avoid animal stress

### Visibility

Transparent removable side panels allow optimal visibility of the entire cage volume: quick and easy daily check.





X-TYPE



R-TYPE



P-TYPE



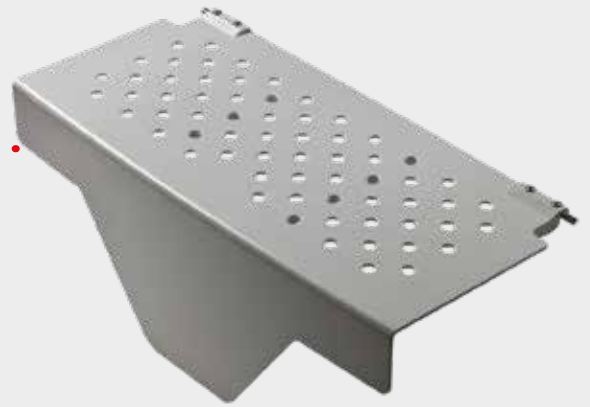
PUSH-AND-CLOSE GATE  
WITH SAFETY LOCK SYSTEM



TRANSPARENT SIDE PANELS - INTERLINKED RACKS



3D ENVIRONMENT - RAISED SHELF



3D ENVIRONMENT - OPTIONAL NESTING BOX



CAGE INTERLINKING - SOCIAL HOUSING

### Ergonomics and Quality

- Injection moulded Noryl cage means:
  - Smooth edges that eliminate dirty traps, ensuring perfect cleaning
  - Stacking lugs for proper stacking, rather than "sticking"
  - Thickness uniformity for a lighter and more resistant cage
  - Stress and tension free plastic offering greater thermal and mechanical resistance for a long lasting product that withstands repetitive washing and autoclaving cycles.
- A push-and-close system allows the gate to be closed easily even while holding animals; the gate features also a safety lock system to avoid animals escaping from the cage
- A fast-dry roof design results in quicker and easier washing procedures
- Rounded corners and lighter rack ensure easy and safe transportation
- The most compact housing solution in the market for a high density

### Low running costs

The absence of dirty traps, the quick drying properties and the consequent quicker washing procedures, together with the optimal ergonomics and the longer lifetime due to the enhanced mechanical resistance result in dramatically lower running costs.



### FAST-DRY ROOF DESIGN

### CAGE

	X	R	P
Floor area (cm <sup>2</sup> / ft <sup>2</sup> )	4264 / 4.59	4670 / 5.03	5456 / 5.87
Overall dimensions W x D x H (mm / in)	713 x 716 x 115 28.06 x 28.19 x 4.53	743 x 716 x 114 29.27 x 28.19 x 4.49	870 x 740 x 131 34.25 x 29.13 x 5.16
Internal height (mm / in)	476 / 18.74	471 / 18.55	604 / 23.76
Plastic type	Noryl - 2-year warranty		
Cage body	Autoclavable, high stackability		
Waste tray	Autoclavable, high stackability, simmetric (no back, no front)		Autoclavable, high stackability
Feeder capacity	2.2 l / 74.39 oz (US) / 77.43 oz (UK)		
Bottle capacity °	750 ml / 25.36 oz (US) / 26.40 oz (UK)		

° can accomodate multiple water bottles

### RACK

Cage type	Rack configuration	Overall rack dimensions L x W x H (mm/in)
X	3 cages (1W x 3H)	784 (817 <sup>°</sup> ) x 820 (869 <sup>°°</sup> ) x 1830 30.87 (32.17 <sup>°</sup> ) x 32.28 (34.20 <sup>°°</sup> ) x 72.05
R	3 cages (1W x 3H)	810 (843 <sup>°</sup> ) x 820 (870 <sup>°°</sup> ) x 1830 31.89 (33.19 <sup>°</sup> ) x 32.28 (34.26 <sup>°°</sup> ) x 72.05
P	2 cages (1W x 2H)	937 (970 <sup>°</sup> ) x 845 (895 <sup>°°</sup> ) x 1718 36.89 (38.19 <sup>°</sup> ) x 33.27 (35.25 <sup>°°</sup> ) x 67.64

° with interlinking device

°° with feeder and water bottle

Note: 3 levels "P" type racks are available upon request

### OPTIONS

- Auto watering system
- S/S feeder with anti-dust cover
- S/S hay feeder
- Enlongated waste tray for "X" type cage

### ACCESSORIES

- Noryl nesting box
- Additional water bottle



- 1 Requirements for Establishments and for the Care of Accommodation of Animals, Annex III of the Directive 2010/63/EU of the European Parliament and of the Council on the protection of animals used for scientific purposes, 22 September 2010
- 2 Guide for the Care and Use of Laboratory Animals, Institute of Laboratory Animal Research - eighth edition, Division on Earth and Life Studies, National Research Council, National Academy Press, Washington D.C. 2011
- 3 Home Office - Animals (Scientific Procedures) Act 1986 Amendment Regulations 2017

	Final body weight (g)	Minimum floor area (cm <sup>2</sup> )	Floor area per animal - groups (cm <sup>2</sup> /in <sup>2</sup> )	Minimum height (cm/in)
EUROPE <sup>1</sup>	< 200	1800	200	23
	200 - 300	1800	350	23
	300 - 450	1800	500	23
	450 - 700	2500	700	23
	> 700	2500	900	23
USA <sup>2</sup>	< 350	-	387 / 60	17.8 / 7
	> 350	-	≥ 651.5 / ≥ 101	17.8 / 7
UK <sup>3</sup>	< 150	1800	200	23
	150 - 200	1800	300*	23
	200 - 250	1800	350	23
	250 - 300	1800	400**	23
	300 - 450	1800	500	23
	450 - 650	2500	700	23
	650 - 700	2500	750**	23
> 700	2500	900	23	

\* Where a shelf is provided for guinea pigs that are use animals or use stock animals, for the purpose of calculating the minimum floor area, up to 100cm<sup>2</sup> of the shelf area per animal may be included where there is adequate height for the animal above and below the shelf.

\*\* Where a shelf is provided for guinea pigs that are use animals or use stock animals, for the purpose of calculating the minimum floor area, up to 50cm<sup>2</sup> of the shelf area per animal may be included where there is adequate height for the animal above and below the shelf.

## Animal Welfare

- Injection moulded perforated Noryl floor:
  - No sharp edges to enhance animal comfort
  - Extra holes on the corners to speed up the draining and drying processes and maintain a clean environment
  - Warm and comfortable cage
- A raised shelf with ramps creates a three-dimensional enriched environment

## Ergonomics and cost-effective

- Injection moulded Noryl cage means:
  - Smooth edges that eliminate dirty traps, ensuring perfect cleaning
  - Stacking lugs for proper stacking, rather than "stucking."
  - Thickness uniformity for a lighter and more resistant cage
  - Stress- and tension- free plastic offering greater thermal and mechanical resistance for a long lasting product that withstands repetitive washing and autoclave cycles
- Rounded corners and lighter rack ensure easy and safe transportation
- Compact housing solution for an higher density

## Flexibility

Available either with solid or perforated bottom to accommodate any research need.



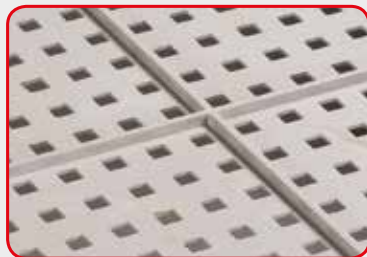
Cage bottom type	Rack configuration	Overall rack dimensions L x W x H (mm/in)
Solid	5 cages (1 W x 5 H)	860 x 780 (846°) x 1656 33.86 x 30.71 (33.31°) x 65.20
Solid	10 cages (2 W x 5 H)	1700 x 780 (846°) x 1656 66.93 x 30.71 (33.31°) x 65.20
Perforated <sup>□□</sup>	4 cages (1 W x 4 H)	860 x 780 (846°) x 1656 33.86 x 30.71 (33.31°) x 65.20
Perforated <sup>□□</sup>	8 cages (2 W x 4 H)	1700 x 780 (846°) x 1656 66.93 x 30.71 (33.31°) x 65.20

### Cage specifications and dimensions

- "W" type solid/perforated cage base
- Size (L x W x H): 814 x 610 x 256 mm  
32.95 x 24.02 x 10.08 in
- Floor area: 4000 cm<sup>2</sup> / 4.3 ft<sup>2</sup>
- Internal height: 281 mm / 11.08 in

<sup>□</sup> with feeders and water bottles

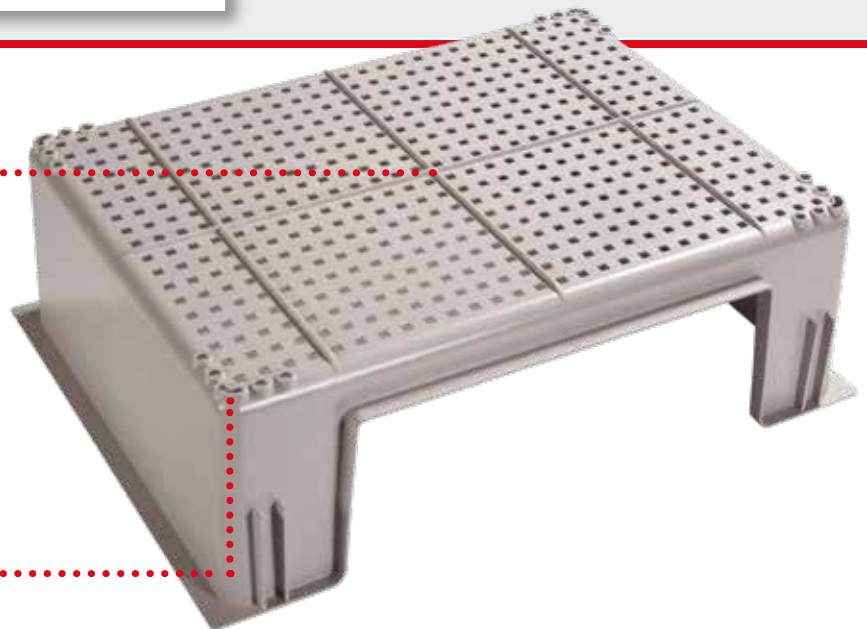
<sup>□□</sup> the rack with perforated cages comes complete with waste trays



INJECTION MOULDED BASE:  
NO DIRTY TRAPS



EXTRA HOLES IN THE  
FOUR CORNERS



WITH PERFORATED  
BOTTOM

WITH SOLID BOTTOM

	Final body weight (g)	Minimum floor area (cm <sup>2</sup> )	Floor area per animal (groups)	Minimum height (cm)
EUROPE <sup>1</sup>	< 600	4500	1500	50
	> 600	4500	3000	50
	adult males	6000	6000	50
	jill and litter	5400	5400	50
UK <sup>2</sup>	< 800	2250	1500	50
	> 800	4500	3000	50

1 Requirements for Establishments and for the Care of Accommodation of Animals, Annex III of the Directive 2010/63/EU of the European Parliament and of the Council on the protection of animals used for scientific purposes, 22 September 2010

2 Home Office - Animals (Scientific Procedures) Act 1986 Amendment Regulations 2012

## Cage specifications and dimensions

### "P" TYPE SOLID CAGE BASE

- Size (L x W x H): 870 x 740 x 130 mm  
34.25 x 29.13 x 5.118 in
- Floor area: 5456 cm<sup>2</sup> / 5.87 ft<sup>2</sup>
- Internal Height: 600 mm / 23.62 in

## Rack specifications and dimensions

- N. of Cages: 2 (1W x 2H)
- Overall Rack Dimensions (L x W x H):  
940 x 845 (+160) x 1700 mm  
37.01 x 33.27 (+6.299) x 66.93 in



ENVIRONMENTAL ENRICHMENT: RAISED SHELF



ENVIRONMENTAL ENRICHMENT: INTERLINKING TUBE



### Animal Welfare

- The rack interlinking increases floor space and allows communication between cages for social housing
- The interlinking tube connects two cages to enhance social behaviour
- The raised shelf and nesting box, together with the internal height, create an ideal three-dimensional enriched environment
- The newly designed stainless-steel rack with noise-free Polycarbonate panels helps to avoid animal stress
- Transparent polycarbonate gate avoids air drafts on the animal

### Ergonomics, Functionality and Cost-effectiveness

- A push-and-close system allows to easily close the gate even while holding animals; the gate features also a safe locking system to avoid animals escaping from the cage
- A fast-dry roof design results in quicker and easier washing procedures
- Rounded corners and lighter rack ensure easy and safe transportation.

### Visibility: easy daily check

Transparent removable side panels allow optimal visibility of the entire cage volume: quick and easy daily check



COMPANY WITH  
QUALITY SYSTEM  
CERTIFIED BY DNV GL  
= ISO 9001 =

COMPANY WITH  
ENVIRONMENTAL SYSTEM  
CERTIFIED BY DNV GL  
= ISO 14001 =

 **TECNIPLAST**  
*innovation through passion*

#### HEADQUARTERS

ITALY | Tel. +39 0332 809711 · [www.tecniplast.it](http://www.tecniplast.it) · E-mail: [tecnicom@tecniplast.it](mailto:tecnicom@tecniplast.it); [venditeitalia@tecniplast.it](mailto:venditeitalia@tecniplast.it)

#### SISTER COMPANIES

AUSTRALIA/NEW ZEALAND | Tel. + 61 2 8845 6500 · [www.tecniplast.it](http://www.tecniplast.it) · E-mail: [info@tecniplast.com.au](mailto:info@tecniplast.com.au)

CANADA | Toll Free: +1 855.347.8718 · [www.tecniplastcanada.com](http://www.tecniplastcanada.com) · E-mail: [info@tecniplastcanada.com](mailto:info@tecniplastcanada.com)

CHINA | Tel. + 86 (0)21 50810920 · [www.tecniplast.cn](http://www.tecniplast.cn) · E-mail: [tecniplastchina@tecniplast.it](mailto:tecniplastchina@tecniplast.it)

FRANCE | Tél. +33 (0)4 72 52 94 41 · [www.tecniplast.fr](http://www.tecniplast.fr) · E-mail: [info@tecniplast.fr](mailto:info@tecniplast.fr)

GERMANY | Tel. +49 (0)8805 921320 · [www.tecniplast.de](http://www.tecniplast.de) · E-mail: [info@tecniplast.de](mailto:info@tecniplast.de)

JAPAN | Tel. +81 (0)3 5770 5375 · [www.tecniplast.it](http://www.tecniplast.it) · E-mail: [info@tecniplastjapan.co.jp](mailto:info@tecniplastjapan.co.jp)

SWITZERLAND | Tel +41 (0)81 750 31 40 · [www.indulab.ch](http://www.indulab.ch) · Email: [infos@indulab.ch](mailto:infos@indulab.ch)

UNITED KINGDOM | Tel. + 44 (0)345 0504556 · [www.tecniplastuk.com](http://www.tecniplastuk.com) · E-mail: [info@tecniplastuk.com](mailto:info@tecniplastuk.com)

USA | Toll Free: +1 877.669.2243 · [www.tecniplastusa.com](http://www.tecniplastusa.com) · E-mail: [info@tecniplastusa.com](mailto:info@tecniplastusa.com)

TO FIND YOUR LOCAL DISTRIBUTOR, PLEASE VISIT [WWW.TECNIPLAST.IT](http://WWW.TECNIPLAST.IT)